

## ZO1 Polyclonal Antibody

Catalog No: #48694



Package Size: #48694-1 50ul #48694-2 100ul

Orders: [order@signalwayantibody.com](mailto:order@signalwayantibody.com)Support: [tech@signalwayantibody.com](mailto:tech@signalwayantibody.com)

## Description

Product Name	ZO1 Polyclonal Antibody
Host Species	Rabbit
Clonality	Polyclonal
Purification	The antibody was affinity-purified from rabbit antiserum by affinity-chromatography using epitope-specific immunogen.
Applications	WB;IF;ELISA
Species Reactivity	Human;Mouse;Pig
Specificity	ZO1 Polyclonal Antibody detects endogenous levels of protein.
Immunogen Description	Synthesized peptide derived from part region of human protein.AA1600-1700
Target Name	TJP1 ZO1
Calculated MW	192kD
Concentration	1 mg/ml
Formulation	Liquid in PBS containing 50% glycerol, and 0.02% sodium azide.
Storage	Store at -20°C/1 year

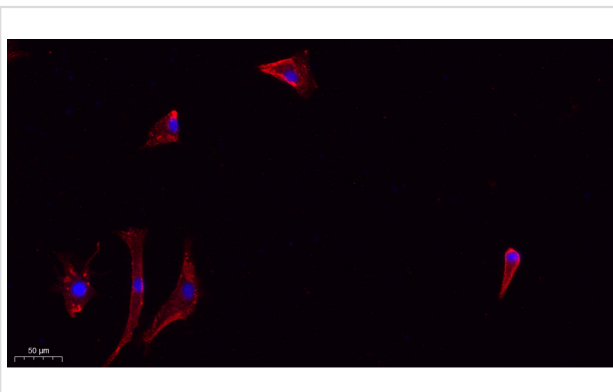
## Application Details

WB 1:500-2000

IF 1:100-300

ELISA 1:5000-20000

## Images



Immunofluorescence analysis of A549. 1,primary Antibody(red) was diluted at 1:200(4°C overnight). 2, Goat Anti Rabbit IgG (H&L) - Alexa Fluor 594 Secondary antibody was diluted at 1:1000(room temperature, 50min).3, Picture B: DAPI(blue) 10min.

Note: This product is for in vitro research use only and is not intended for use in humans or animals.