

## DPS1 Rabbit mAb

Catalog No: #57258

Package Size: #57258-1 50ul #57258-2 100ul

Orders: [order@signalwayantibody.com](mailto:order@signalwayantibody.com)Support: [tech@signalwayantibody.com](mailto:tech@signalwayantibody.com)

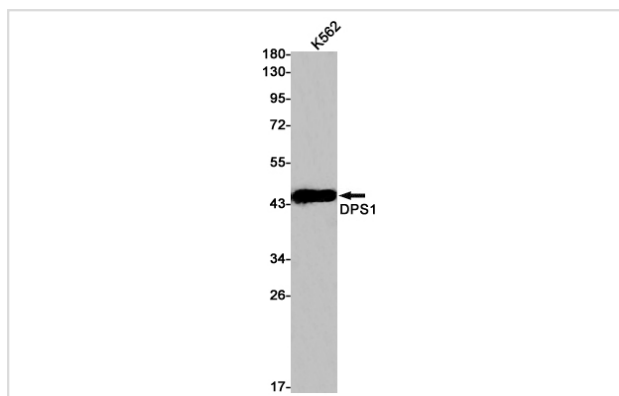
## Description

Product Name	DPS1 Rabbit mAb
Host Species	Rabbit
Clonality	Monoclonal
Isotype	Rabbit IgG
Applications	WB IP
Species Reactivity	Human
Immunogen Description	A synthetic peptide of human DPS1
Other Names	Trans-prenyltransferase 1; TPT 1; Solanesyl-diphosphate synthase subunit 1; Decaprenyl-diphosphate synthase subunit 1
Accession No.	Swiss-Prot:Q5T2R2 Gene ID:23590
Calculated MW	46 kDa
SDS-PAGE MW	46 kDa
Formulation	50mM Tris-Glycine(pH 7.4), 0.15M NaCl, 40% Glycerol, 0.01% Sodium azide and 0.05% BSA
Storage	Store at 4°C short term. Aliquot and store at -20°C long term. Avoid freeze/thaw cycles.

## Application Details

IP: 1/20WB: 1/500-1/1000

## Images



Western blot analysis of DPS1 in K562 lysates using DPS1 antibody.

Note: This product is for in vitro research use only and is not intended for use in humans or animals.