

NCAPH2 Rabbit mAb

Catalog No: #57296



Package Size: #57296-1 50ul #57296-2 100ul

Orders: [order@signalwayantibody.com](mailto:order@signalwayantibody.com)  
Support: [tech@signalwayantibody.com](mailto:tech@signalwayantibody.com)

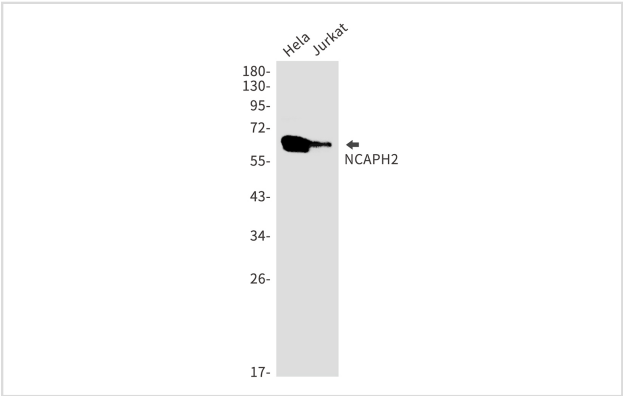
Description

Product Name	NCAPH2 Rabbit mAb
Host Species	Rabbit
Clonality	Monoclonal
Isotype	Rabbit IgG
Applications	WB IHC IP ICC
Species Reactivity	Human
Immunogen Description	A synthetic peptide of human NCAPH2
Other Names	CAPH2
Accession No.	Swiss-Prot:Q6IBW4 Gene ID:29781
Calculated MW	68 kDa
SDS-PAGE MW	68 kDa
Formulation	50mM Tris-Glycine(pH 7.4), 0.15M NaCl, 40% Glycerol, 0.01% Sodium azide and 0.05% BSA
Storage	Store at 4°C short term. Aliquot and store at -20°C long term. Avoid freeze/thaw cycles.

Application Details

IP: 1/20WB: 1/500-1/1000IHC: 1/50-1/100ICC: 1/50-1/200

Images



Western blot analysis of NCAPH2 in HeLa, Jurkat lysates using NCAPH2 antibody.

Note: This product is for in vitro research use only and is not intended for use in humans or animals.