

RAP1 Rabbit mAb

Catalog No: #57332

Package Size: #57332-1 50ul #57332-2 100ul

Orders: order@signalwayantibody.com

Support: tech@signalwayantibody.com

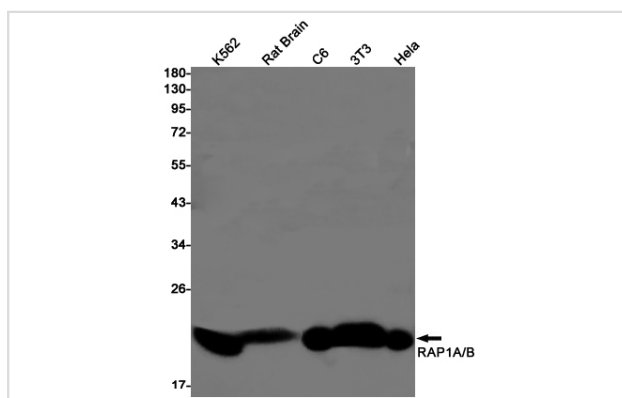
Description

| | |
|-----------------------|--|
| Product Name | RAP1 Rabbit mAb |
| Host Species | Rabbit |
| Clonality | Monoclonal |
| Isotype | Rabbit IgG |
| Applications | WB IP |
| Species Reactivity | Human,Mouse,Rat |
| Immunogen Description | A synthetic peptide of human RAP1A/B |
| Other Names | Ras-related protein Rap-1b; K-REV; RAL1B |
| Accession No. | Swiss-Prot:P61224 Gene ID:5908 |
| Calculated MW | 21 kDa |
| SDS-PAGE MW | 21 kDa |
| Formulation | 50mM Tris-Glycine(pH 7.4), 0.15M NaCl, 40% Glycerol, 0.01% Sodium azide and 0.05% BSA |
| Storage | Store at 4°C short term. Aliquot and store at -20°C long term. Avoid freeze/thaw cycles. |

Application Details

IP:1/20WB: 1/500-1/1000

Images



Western blot analysis of RAP1A/B in K562, rat Brain, C6, 3T3, HeLa lysates using RAP1 antibody.

Note: This product is for in vitro research use only and is not intended for use in humans or animals.