

RPS6 Rabbit mAb

Catalog No: #57333



Package Size: #57333-1 50ul #57333-2 100ul

Orders: order@signalwayantibody.com

Support: tech@signalwayantibody.com

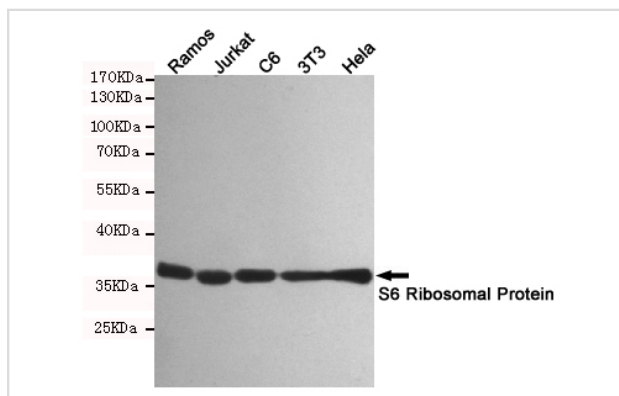
Description

| | |
|-----------------------|--|
| Product Name | RPS6 Rabbit mAb |
| Host Species | Rabbit |
| Clonality | Monoclonal |
| Isotype | Rabbit IgG |
| Applications | WB IHC IP ICC |
| Species Reactivity | Human,Mouse,Rat |
| Immunogen Description | Synthetic peptide derived from human S6 Ribosomal Protein. |
| Other Names | RPS6; OK/SW-cl.2; 40S ribosomal protein S6; Phosphoprotein NP33 |
| Accession No. | Swiss-Prot:P62753 Gene ID:6194 |
| Calculated MW | 29 kDa |
| SDS-PAGE MW | 29 kDa |
| Formulation | 50mM Tris-Glycine(pH 7.4), 0.15M NaCl, 40% Glycerol, 0.01% Sodium azide and 0.05% BSA |
| Storage | Store at 4°C short term. Aliquot and store at -20°C long term. Avoid freeze/thaw cycles. |

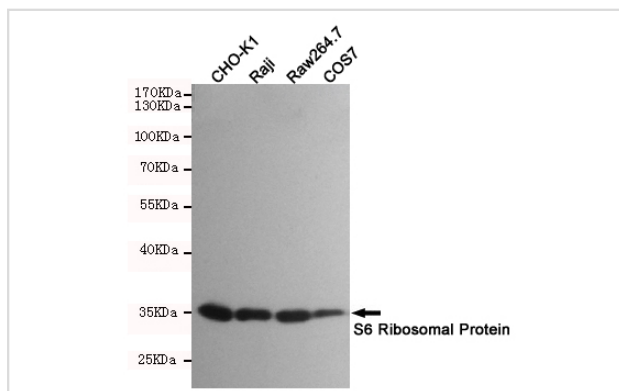
Application Details

IP:1/20WB: 1/500-1/1000IHC: 1/50-1/100ICC: 1/50-1/200

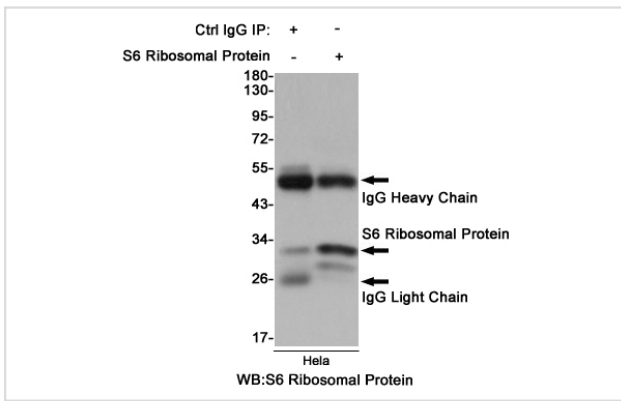
Images



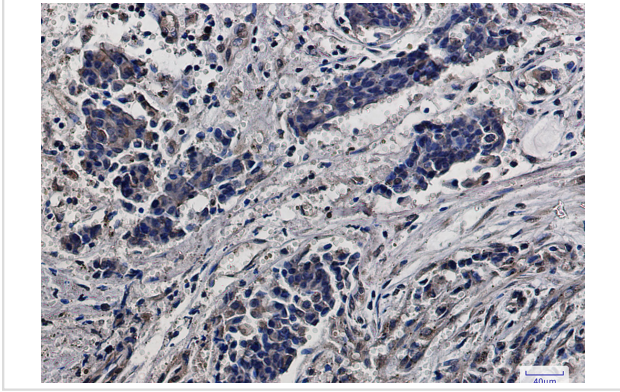
Western blot analysis of S6 Ribosomal Protein in Ramos, Jurkat, C6, 3T3 and HeLa lysates using S6 Ribosomal Protein antibody.



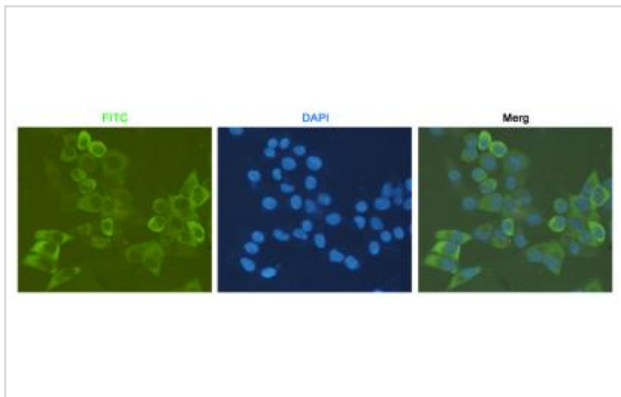
Western blot analysis of S6 Ribosomal Protein in CHO-K1, Raji, Raw264.7 and COS7 lysates using S6 Ribosomal Protein antibody.



Immunoprecipitation analysis of HeLa cell lysates using S6 Ribosomal Protein antibody.



Immunohistochemistry analysis of paraffin-embedded Human breast cancer using RPS6 antibody. High-pressure and temperature Sodium Citrate pH 6.0 was used for antigen retrieval.



Immunocytochemistry analysis of HeLa using antiS6 Ribosomal Protein antibody.

Note: This product is for in vitro research use only and is not intended for use in humans or animals.