

Ubiquitin Conjugating Enzyme E2 D3 Rabbit mAb

Catalog No: #57359

Package Size: #57359-1 50ul #57359-2 100ul

Orders: order@signalwayantibody.com

Support: tech@signalwayantibody.com

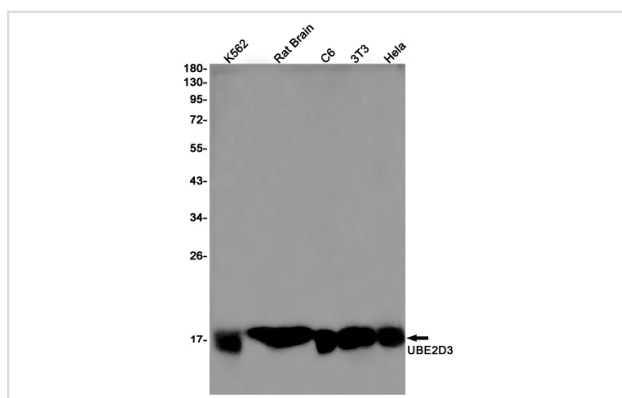
Description

Product Name	Ubiquitin Conjugating Enzyme E2 D3 Rabbit mAb
Host Species	Rabbit
Clonality	Monoclonal
Isotype	Rabbit IgG
Applications	WB IP
Species Reactivity	Human,Mouse,Rat
Immunogen Description	A synthetic peptide of human UBE2D3
Other Names	ubiquitin conjugating enzyme E2D 3; UBC4/5; UBCH5C; E2(17)KB3
Accession No.	Swiss-Prot:P61077 Gene ID:7323
Calculated MW	17 kDa
SDS-PAGE MW	17 kDa
Formulation	50mM Tris-Glycine(pH 7.4), 0.15M NaCl, 40% Glycerol, 0.01% Sodium azide and 0.05% BSA
Storage	Store at 4°C short term. Aliquot and store at -20°C long term. Avoid freeze/thaw cycles.

Application Details

IP:1/20WB: 1/500-1/1000

Images



Western blot analysis of UBE2D3 in K562, rat Brain, C6, 3T3, HeLa lysates using Ubiquitin Conjugating Enzyme E2 D3 antibody.

Note: This product is for in vitro research use only and is not intended for use in humans or animals.