

Tight Junction Protein ZO 3 Rabbit mAb

Catalog No: #57364



Package Size: #57364-1 50ul #57364-2 100ul

Orders: order@signalwayantibody.com
Support: tech@signalwayantibody.com

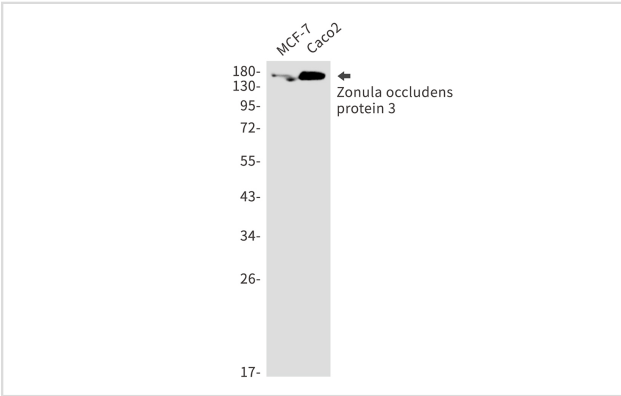
Description

Product Name	Tight Junction Protein ZO 3 Rabbit mAb
Host Species	Rabbit
Clonality	Monoclonal
Isotype	Rabbit IgG
Applications	WB
Species Reactivity	Human,Rat
Immunogen Description	A synthetic peptide of human Zonula occludens protein 3
Other Names	ZO3; ZO-3
Accession No.	Swiss-Prot:O95049 Gene ID:27134
Calculated MW	101 kDa
SDS-PAGE MW	140 kDa
Formulation	50mM Tris-Glycine(pH 7.4), 0.15M NaCl, 40% Glycerol, 0.01% Sodium azide and 0.05% BSA
Storage	Store at 4°C short term. Aliquot and store at -20°C long term. Avoid freeze/thaw cycles.

Application Details

WB: 1/500-1/1000

Images



Western blot analysis of Zonula occludens protein 3 in MCF-7, Caco2 lysates using Tight Junction Protein ZO 3 antibody.

Note: This product is for in vitro research use only and is not intended for use in humans or animals.