

## NR2F2 Rabbit mAb

Catalog No: #57385



Package Size: #57385-1 50ul #57385-2 100ul

Orders: order@signalwayantibody.com

Support: tech@signalwayantibody.com

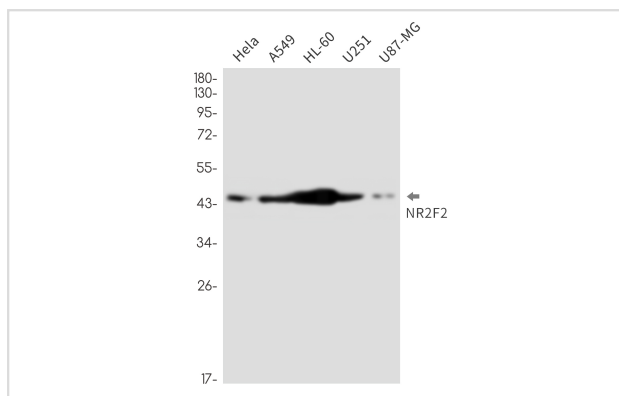
## Description

Product Name	NR2F2 Rabbit mAb
Host Species	Rabbit
Clonality	Monoclonal
Isotype	Rabbit IgG
Applications	WB IHC IP
Species Reactivity	Human
Immunogen Description	A synthetic peptide of human NR2F2
Other Names	NR2F2; ARP1; TFCOUP2; COUP transcription factor 2; COUP-TF2; Apolipoprotein A-I regulatory protein 1; ARP-1; COUP transcription factor II; COUP-TF II; Nuclear receptor subfamily 2 group F member 2
Accession No.	Swiss-Prot:P24468 Gene ID:7026
Calculated MW	46 kDa
SDS-PAGE MW	46 kDa
Formulation	50mM Tris-Glycine(pH 7.4), 0.15M NaCl, 40% Glycerol, 0.01% Sodium azide and 0.05% BSA
Storage	Store at 4°C short term. Aliquot and store at -20°C long term. Avoid freeze/thaw cycles.

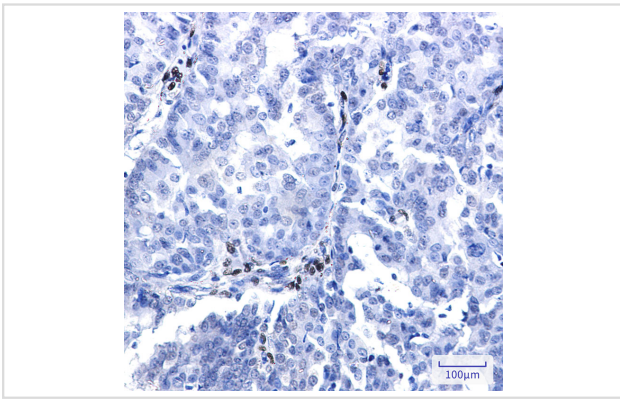
## Application Details

IP: 1/20WB: 1/500-1/1000IHC: 1/50-1/100

## Images



Western blot analysis of NR2F2 in HeLa, A549, HL-60, U251, U87-MG lysates using NR2F2 antibody.



Immunohistochemistry analysis of paraffin-embedded Human breast cancer using NR2F2 antibody. High-pressure and temperature Sodium Citrate pH 6.0 was used for antigen retrieval.

---

Note: This product is for in vitro research use only and is not intended for use in humans or animals.