

## Dynein Light Chain Tctex Type 1 Rabbit mAb

Catalog No: #57397

Package Size: #57397-1 50ul #57397-2 100ul

Orders: order@signalwayantibody.com

Support: tech@signalwayantibody.com

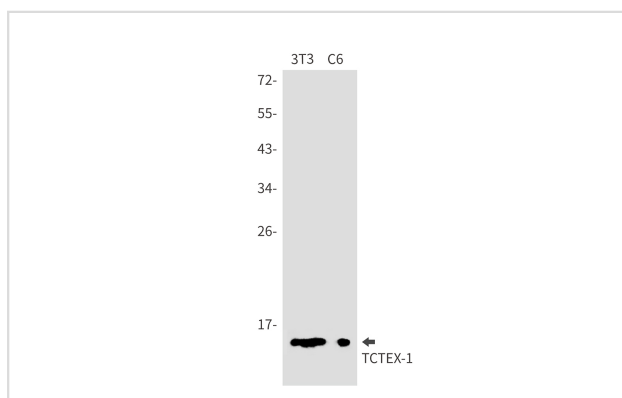
## Description

Product Name	Dynein Light Chain Tctex Type 1 Rabbit mAb
Host Species	Rabbit
Clonality	Monoclonal
Isotype	Rabbit IgG
Applications	WB IHC IP ICC
Species Reactivity	Human,Mouse,Rat
Immunogen Description	Recombinant protein of human TCTEX-1
Other Names	CW-1; TCTEL1; tctex-1
Accession No.	Swiss-Prot:P63172 Gene ID:6993
Calculated MW	12 kDa
SDS-PAGE MW	12 kDa
Formulation	50mM Tris-Glycine(pH 7.4), 0.15M NaCl, 40% Glycerol, 0.01% Sodium azide and 0.05% BSA
Storage	Store at 4°C short term. Aliquot and store at -20°C long term. Avoid freeze/thaw cycles.

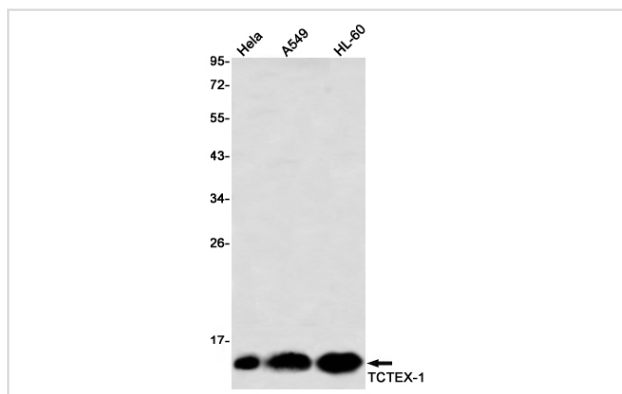
## Application Details

IP: 1/20WB: 1/500-1/1000IHC: 1/50-1/100ICC: 1/50-1/200

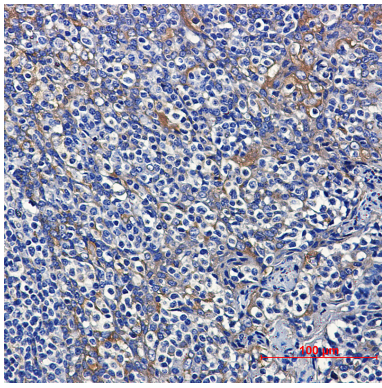
## Images



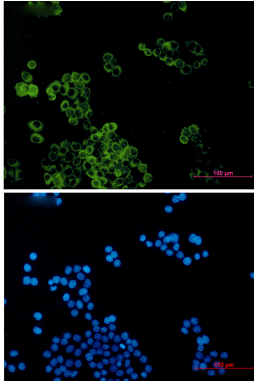
Western blot analysis of TCTEX1 in 3T3, C6 lysates using TCTEX1 antibody.



Western blot analysis of TCTEX1 in HeLa, A549, HL-60 lysates using TCTEX1 antibody



Immunohistochemistry analysis of paraffin-embedded Human tonsil using TCTEX1 antibody. High-pressure and temperature Sodium Citrate pH 6.0 was used for antigen retrieval.



Immunocytochemistry analysis of Dynein Light Chain Tctex Type 1 (green) in HeLa using Dynein Light Chain Tctex Type 1 antibody, and DAPI (blue).

---

Note: This product is for in vitro research use only and is not intended for use in humans or animals.