

## YTHDC2 Rabbit mAb

Catalog No: #57399

Package Size: #57399-1 50ul #57399-2 100ul

Orders: [order@signalwayantibody.com](mailto:order@signalwayantibody.com)Support: [tech@signalwayantibody.com](mailto:tech@signalwayantibody.com)

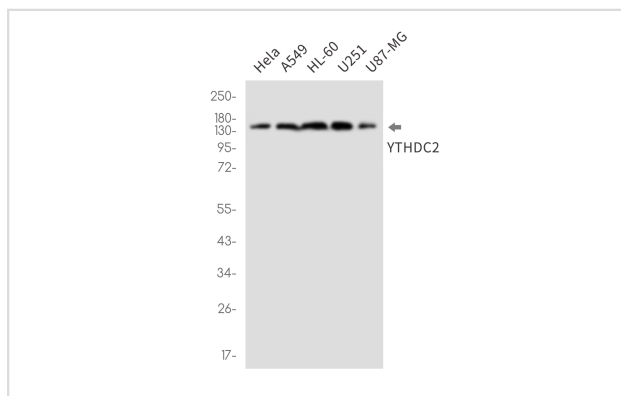
## Description

Product Name	YTHDC2 Rabbit mAb
Host Species	Rabbit
Clonality	Monoclonal
Isotype	Rabbit IgG
Applications	WB IP
Species Reactivity	Human
Immunogen Description	Recombinant protein of mouse YTHDC2
Other Names	CAHL; hYTHDC2
Accession No.	Swiss-Prot:B2RR83 Gene ID:240255
Calculated MW	161 kDa
SDS-PAGE MW	161 kDa
Formulation	50mM Tris-Glycine(pH 7.4), 0.15M NaCl, 40% Glycerol, 0.01% Sodium azide and 0.05% BSA
Storage	Store at 4°C short term. Aliquot and store at -20°C long term. Avoid freeze/thaw cycles.

## Application Details

IP:1/20WB: 1/500-1/1000

## Images



Western blot analysis of YTHDC2 in HeLa, A549, HL-60, U251, U87-MG lysates using YTHDC2 antibody.

Note: This product is for in vitro research use only and is not intended for use in humans or animals.