

## RFX3 Polyclonal Antibody

Catalog No: #48794



Package Size: #48794-1 50ul #48794-2 100ul

Orders: [order@signalwayantibody.com](mailto:order@signalwayantibody.com)Support: [tech@signalwayantibody.com](mailto:tech@signalwayantibody.com)

## Description

Product Name	RFX3 Polyclonal Antibody
Host Species	Rabbit
Clonality	Polyclonal
Isotype	IgG
Purification	The antibody was affinity-purified from rabbit antiserum by affinity-chromatography using epitope-specific immunogen.
Applications	WB;IHC;IF;ELISA
Species Reactivity	Human;Mouse
Specificity	RFX3 Polyclonal Antibody detects endogenous levels of RFX3 protein.
Immunogen Description	The antiserum was produced against synthesized peptide derived from human RFX3.
Target Name	RFX3
Other Names	RFX3; Transcription factor RFX3; Regulatory factor X 3
Calculated MW	84kD
Concentration	1 mg/ml
Formulation	Liquid in PBS containing 50% glycerol, 0.5% BSA and 0.02% sodium azide.
Storage	Store at -20°C/1 year

## Application Details

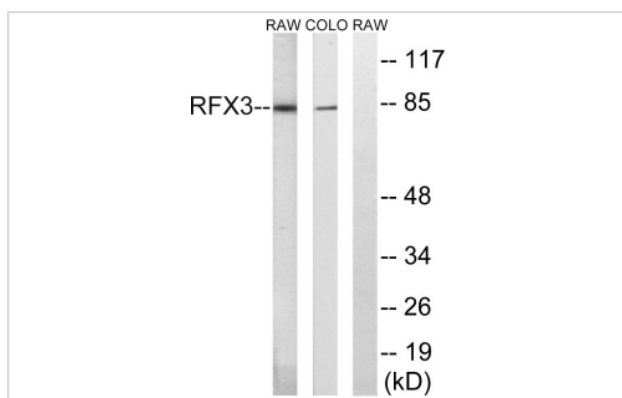
WB 1:500 - 1:2000.

IHC 1:100 - 1:300.

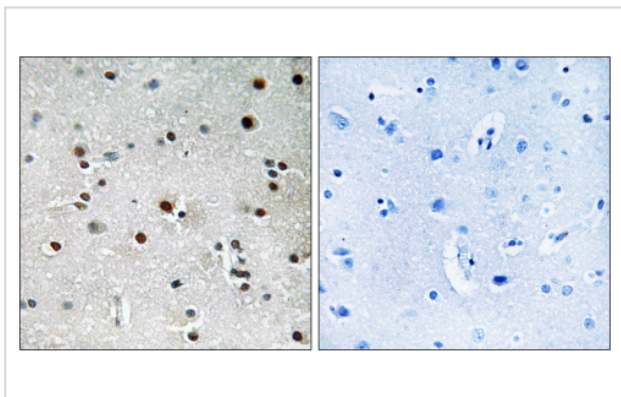
ELISA: 1:40000.

IF 1:50-200

## Images



Western blot analysis of lysates from COLO and RAW264.7 cells, using RFX3 Antibody. The lane on the right is blocked with the synthesized peptide.



Immunohistochemistry analysis of paraffin-embedded human brain tissue, using RFX3 Antibody. The picture on the right is blocked with the synthesized peptide.

---

Note: This product is for in vitro research use only and is not intended for use in humans or animals.