

## NMI Antibody

Catalog No: #57171

Package Size: #57171-1 50ul #57171-2 100ul

Orders: [order@signalwayantibody.com](mailto:order@signalwayantibody.com)Support: [tech@signalwayantibody.com](mailto:tech@signalwayantibody.com)

## Description

Product Name	NMI Antibody
Host Species	Rabbit
Clonality	Monoclonal
Isotype	Rabbit IgG
Purification	Affinity-chromatography
Applications	WB,IHC,ICC/IF,IP
Species Reactivity	Human
Immunogen Description	A synthesized peptide derived from human NMI
Target Name	NMI
Other Names	N myc interactor; NMI; NMYC and STAT interactor; NMYC interactor;
Calculated MW	38kDa
Formulation	Rabbit IgG in phosphate buffered saline , pH 7.4, 150mM NaCl, 0.02% sodium azide and 50% glycerol.
Storage	Store at +4°C short term. Store at -20°C long term. Avoid freeze / thaw cycle.

## Application Details

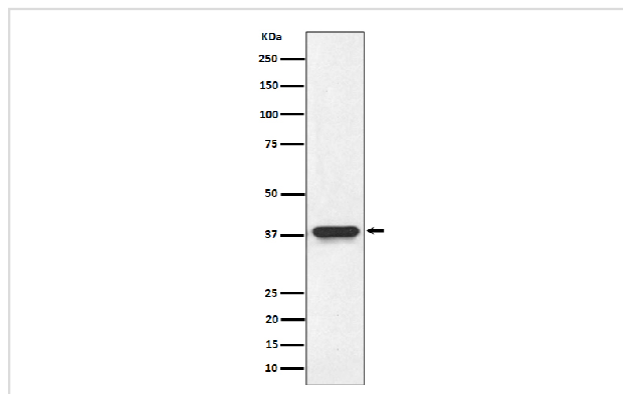
WB 1:500~1:2000

IHC 1:50~1:200

ICC/IF 1:50~1:200

IP 1:50

## Images



Western blot analysis of NMI expression in HeLa cell lysate.

Note: This product is for in vitro research use only and is not intended for use in humans or animals.