

# CD20 mouse mAb

Catalog No: #48819



Package Size: #48819-1 #48819-2

Orders: [order@signalwayantibody.com](mailto:order@signalwayantibody.com)

Support: [tech@signalwayantibody.com](mailto:tech@signalwayantibody.com)

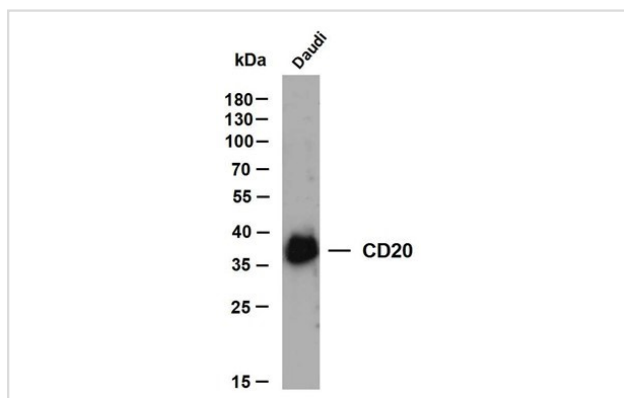
## Description

Product Name	CD20 mouse mAb
Host Species	Mouse
Clonality	Monoclonal
Isotype	IgG1, Kappa
Purification	The antibody was affinity-purified from mouse ascites by affinity-chromatography using specific immunogen.
Applications	IHC;WB;IF
Species Reactivity	Hu
Specificity	The antibody can specifically recognize human CD20 protein.
Immunogen Description	Synthesized peptide derived from human CD20
Target Name	MS4A1 CD20
Other Names	B-lymphocyte antigen CD20 (B-lymphocyte surface antigen B1;Bp35;Leukocyte surface antigen Leu-16;Membrane-spanning 4-domains subfamily A member 1;CD antigen CD20)
Concentration	1 mg/ml
Formulation	Liquid in PBS containing 50% glycerol, 0.5% BSA and 0.84% sodium azide.
Storage	Store at -20°C 1 year

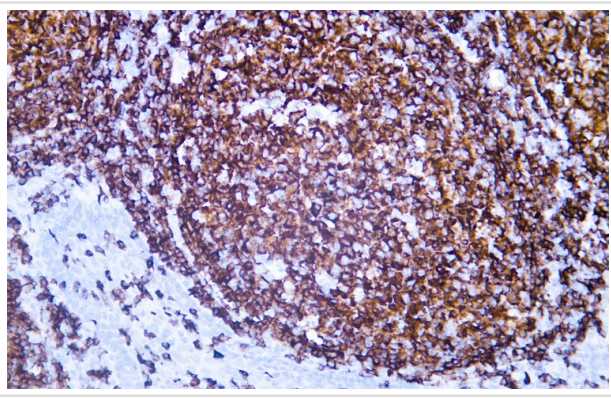
## Application Details

IHC-p 1:100-500, WB 1:200-1000, IF 1:100-500

## Images



Whole cell lysates were separated by 10% SDS-PAGE, and the membrane was blotted with anti-CD20 antibody.



Human tonsil tissue was stained with anti-CD20 antibody.

---

Note: This product is for in vitro research use only and is not intended for use in humans or animals.