

TIS11D Polyclonal Antibody

Catalog No: #48901

Package Size: #48901-1 50ul #48901-2 100ul

Orders: order@signalwayantibody.comSupport: tech@signalwayantibody.com

Description

Product Name	TIS11D Polyclonal Antibody
Host Species	Rabbit
Clonality	Polyclonal
Isotype	IgG
Purification	The antibody was affinity-purified from rabbit antiserum by affinity-chromatography using epitope-specific immunogen.
Applications	WB;IHC;IF;ELISA
Species Reactivity	Human;Mouse
Specificity	TIS11D Polyclonal Antibody detects endogenous levels of TIS11D protein.
Immunogen Description	The antiserum was produced against synthesized peptide derived from human TISD.
Other Names	ZFP36L2; BRF2; ERF2; RNF162C; TIS11D; Zinc finger protein 36; C3H1 type-like 2; ZFP36-like 2; Butyrate response factor 2; EGF-response factor 2; ERF-2; Protein TIS11D
Calculated MW	55kD
Concentration	1mg/ml
Formulation	Liquid in PBS containing 50% glycerol, 0.5% BSA and 0.02% sodium azide.
Storage	Store at -20°C 1 year

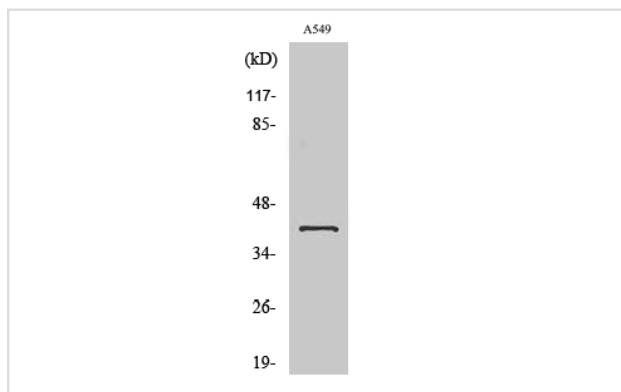
Application Details

WB 1:500 - 1:2000.

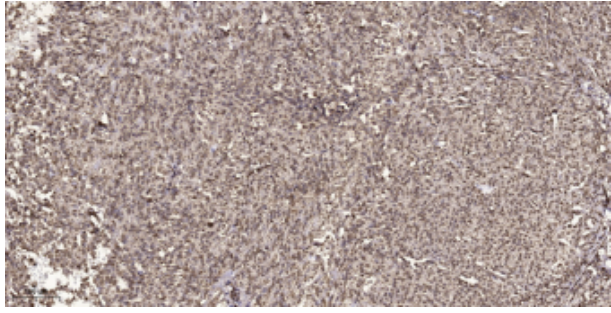
IHC 1:100 - 1:300.

ELISA: 1:20000.. IF 1:50-200

Images



Western Blot analysis of various cells using TIS11D Polyclonal Antibody.



Immunohistochemical analysis of paraffin-embedded human small intestinal carcinoma tissue.

Note: This product is for in vitro research use only and is not intended for use in humans or animals.