

TTC22 rabbit pAb

Catalog No: #49031



Package Size: #49031-1 50ul #49031-2 100ul

Orders: order@signalwayantibody.comSupport: tech@signalwayantibody.com

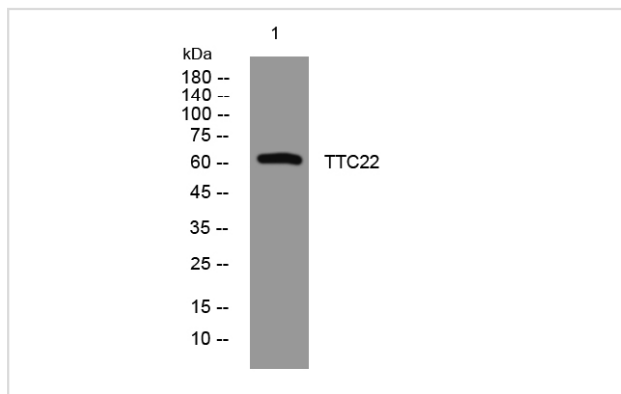
Description

Product Name	TTC22 rabbit pAb
Host Species	Rabbit
Clonality	Polyclonal
Isotype	IgG
Purification	The antibody was affinity-purified from rabbit antiserum by affinity-chromatography using epitope-specific immunogen.
Applications	WB
Species Reactivity	Human;Mouse
Specificity	This antibody detects endogenous levels of TTC22 at Human/Mouse
Immunogen Description	Synthesized peptide derived from human TTC22
Target Name	TTC22
Other Names	Tetratricopeptide repeat protein 22 (TPR repeat protein 22)
Calculated MW	60kD
Concentration	1 mg/ml
Formulation	Liquid in PBS containing 50% glycerol, 0.5% BSA and 0.02% sodium azide.
Storage	Store at -20°C/1 year

Application Details

WB 1:500-2000

Images



Western blot analysis of lysates from SH-SY5Y cells, primary antibody was diluted at 1:1000, 4° over night

Note: This product is for in vitro research use only and is not intended for use in humans or animals.