

## Bestrophin-1 Polyclonal Antibody

Catalog No: #49033



Package Size: #49033-1 50ul #49033-2 100ul

Orders: [order@signalwayantibody.com](mailto:order@signalwayantibody.com)Support: [tech@signalwayantibody.com](mailto:tech@signalwayantibody.com)

## Description

Product Name	Bestrophin-1 Polyclonal Antibody
Host Species	Rabbit
Clonality	Polyclonal
Isotype	IgG
Purification	The antibody was affinity-purified from rabbit antiserum by affinity-chromatography using epitope-specific immunogen.
Applications	WB;IHC;IF
Species Reactivity	Human;Rat;Mouse
Specificity	The antibody detects endogenous Bestrophin-1 protein
Immunogen Description	Synthetic Peptide of Bestrophin-1
Target Name	BEST1
Other Names	Bestrophin-1 (TU15B;Vitelliform macular dystrophy protein 2)
Calculated MW	67kD
Concentration	1 mg/ml
Formulation	Liquid in PBS containing 50% glycerol, 0.5% BSA and 0.02% sodium azide.
Storage	Store at -20°C/1 year

## Application Details

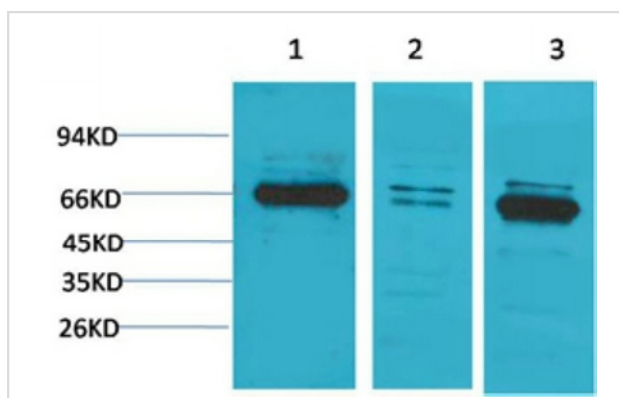
WB 1:500 - 1:2000.

IHC 1:100 - 1:300.

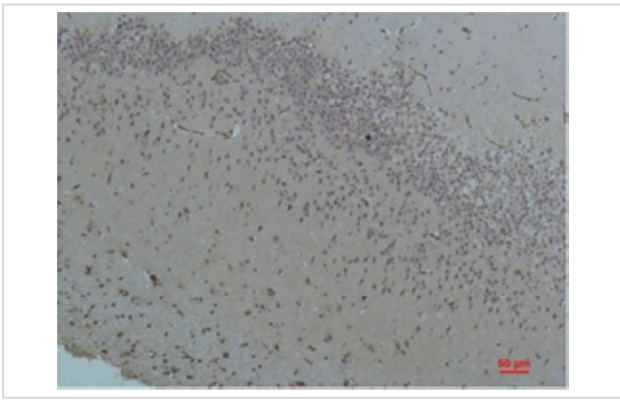
ELISA: 1:40000..

IF 1:50-200

## Images



Western blot analysis of 1) PC3, 2) Mouse Brain Tissue, 3) Rat Brain Tissue with Bestrophin-1 Rabbit pAb diluted at 1:2,000.



Immunohistochemical analysis of paraffin-embedded Rat Brain Tissue using Bestrophin-1 Rabbit pAb diluted at 1:200.

---

Note: This product is for in vitro research use only and is not intended for use in humans or animals.