

## PD-L2 Polyclonal Antibody

Catalog No: #49037



Package Size: #49037-1 50ul #49037-2 100ul

Orders: order@signalwayantibody.com

Support: tech@signalwayantibody.com

## Description

Product Name	PD-L2 Polyclonal Antibody
Host Species	Rabbit
Clonality	Polyclonal
Isotype	IgG
Purification	The antibody was affinity-purified from rabbit antiserum by affinity-chromatography using epitope-specific immunogen.
Applications	WB;IHC;IF;ELISA
Species Reactivity	Human;Mouse;Rat
Specificity	The antibody detects endogenous PD-L2
Immunogen Description	Synthetic peptide from human protein
Target Name	PDCD1LG2 B7DC CD273 PDCD1L2 PDL2
Other Names	Programmed cell death 1 ligand 2 (PD-1 ligand 2;PD-L2;PDCD1 ligand 2;Programmed death ligand 2;Butyrophilin B7-DC;B7-DC;CD antigen CD273)
Calculated MW	30kD
Concentration	1 mg/ml
Formulation	Liquid in PBS containing 50% glycerol, 0.5% BSA and 0.02% sodium azide.
Storage	Store at -20°C/1 year

## Application Details

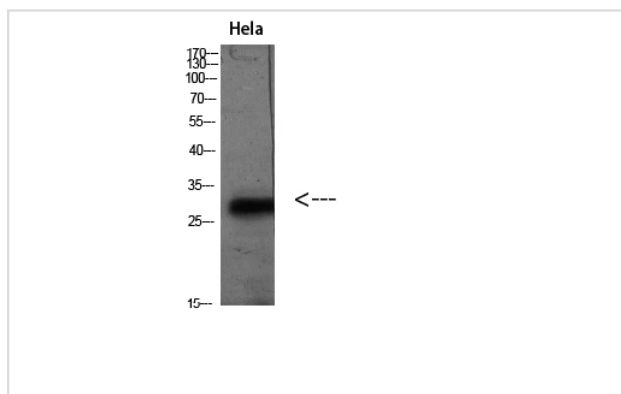
WB 1:500-2000,

IHC-p 1:50-200,

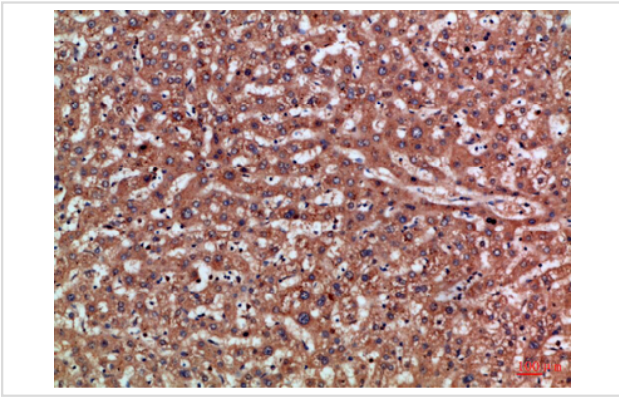
ELISA 1:10000-20000.

IF 1:50-200

## Images



Western blot analysis of HeLa(TSA 400nM 24h) lysate, antibody was diluted at 2000.



Immunohistochemical analysis of paraffin-embedded Human-liver, antibody was diluted at 1:100

---

Note: This product is for in vitro research use only and is not intended for use in humans or animals.