

## 3BHS2 Polyclonal Antibody

Catalog No: #49040



Package Size: #49040-1 50ul #49040-2 100ul

Orders: [order@signalwayantibody.com](mailto:order@signalwayantibody.com)Support: [tech@signalwayantibody.com](mailto:tech@signalwayantibody.com)

## Description

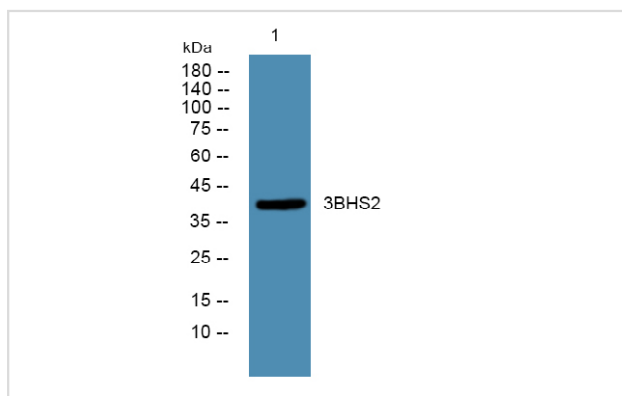
Product Name	3BHS2 Polyclonal Antibody
Host Species	Rabbit
Clonality	Polyclonal
Isotype	IgG
Purification	The antibody was affinity-purified from rabbit antiserum by affinity-chromatography using epitope-specific immunogen.
Applications	WB;ELISA
Species Reactivity	Human;Rat;Mouse
Specificity	3BHS2 Polyclonal Antibody detects endogenous levels of protein.
Immunogen Description	Synthesized peptide derived from human protein
Target Name	HSD3B2 HSDB3B
Calculated MW	40kD
Concentration	1 mg/ml
Formulation	Liquid in PBS containing 50% glycerol, and 0.02% sodium azide.
Storage	Store at -20°C/1 year

## Application Details

WB 1:500-2000

ELISA 1:5000-20000

## Images



Western blot analysis of lysates from K562 cells, primary antibody was diluted at 1:1000, 4° over night

Note: This product is for in vitro research use only and is not intended for use in humans or animals.