

## CD23 (3D1) Mouse mAb

Catalog No: #26203



Package Size: #26203-1 50ul #26203-2 100ul

Orders: order@signalwayantibody.com

Support: tech@signalwayantibody.com

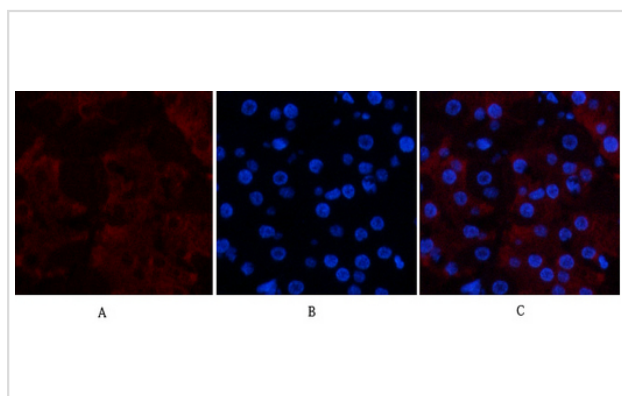
## Description

Product Name	CD23 (3D1) Mouse mAb
Clone No.	3D1-2G4-9B6
Isotype	IgG1
Purification	Affinity purified
Applications	IF,IHC-P
Species Reactivity	Hu,Ms,Rt
Immunogen Description	Synthetic Peptide of CD23
Conjugates	Unconjugated
Modification	Unmodification
Other Names	Fc fragment of IgE low affinity II receptor for, FCER 2, Lymphocyte antigen CD23, Lymphocyt
Accession No.	SwissProtID:P06734Gene ID:2208
Calculated MW	28,38,49kDa
Cell Localization	Cell membrane, Membrane, Secreted
Tag Info	The antibody detects endogenous CD23 proteins.
Formulation	PBS, pH 7.4, containing 0.02% sodium azide as Preservative and 50% Glycerol.
Storage	-20°C/1 year

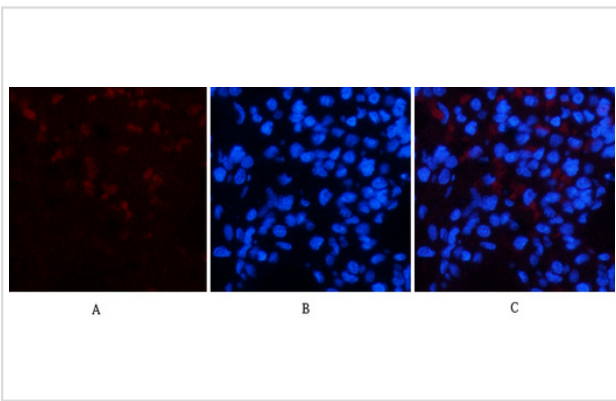
## Application Details

IF: 1:50-200 IHC: 1:200

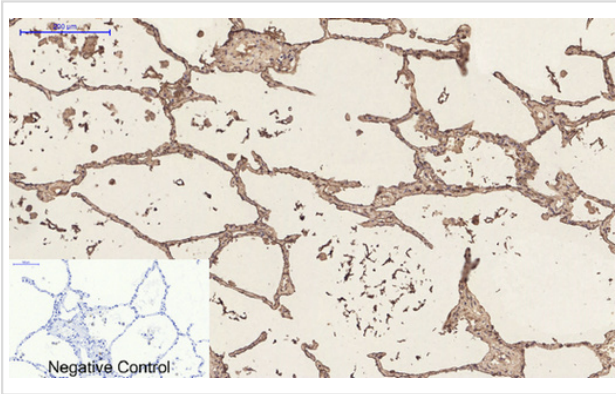
## Images



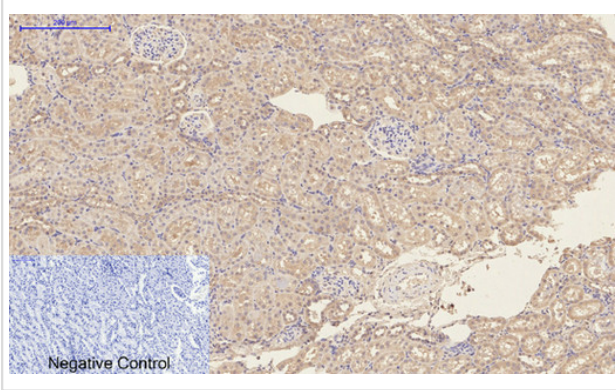
Immunofluorescence analysis of human-stomach tissue.  
 1,CD23 Monoclonal Antibody(1E9)(red) was diluted at 1:200(4h C,overnight). 2, Cy3 labled Secondary antibody was diluted at 1:300(room temperature, 50min).3, Picture B: DAPI(blue) 10min. Picture A:Target. Picture B: DAPI. Picture C: merge of A+B



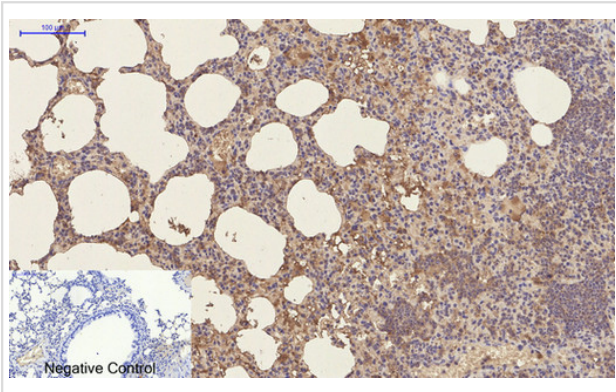
Immunofluorescence analysis of rat-lung tissue. 1,CD23 Monoclonal Antibody(1E9)(red) was diluted at 1:200(4 $\Lambda$  C,overnight). 2, Cy3 labeled Secondary antibody was diluted at 1:300(room temperature, 50min).3, Picture B: DAPI(blue) 10min. Picture A:Target. Picture B: DAPI. Picture C: merge of A+B



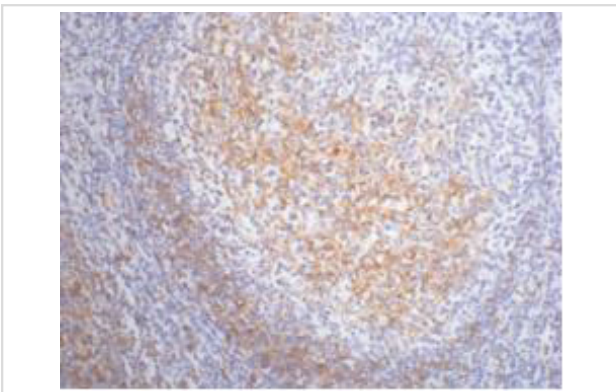
Immunohistochemical analysis of paraffin-embedded Human-lung tissue. 1,CD23 Monoclonal Antibody(1E9) was diluted at 1:200(4 $\Lambda$  C,overnight). 2, Sodium citrate pH 6.0 was used for antibody retrieval(>98 $\Lambda$  C,20min). 3,Secondary antibody was diluted at 1:200(room temperature, 30min). Negative control was used by secondary antibody only.



Immunohistochemical analysis of paraffin-embedded Rat-kidney tissue. 1,CD23 Monoclonal Antibody(1E9) was diluted at 1:200(4 $\Lambda$  C,overnight). 2, Sodium citrate pH 6.0 was used for antibody retrieval(>98 $\Lambda$  C,20min). 3,Secondary antibody was diluted at 1:200(room temperature, 30min). Negative control was used by secondary antibody only.



Immunohistochemical analysis of paraffin-embedded Mouse-lung tissue. 1,CD23 Monoclonal Antibody(1E9) was diluted at 1:200(4 $\Lambda$  C,overnight). 2, Sodium citrate pH 6.0 was used for antibody retrieval(>98 $\Lambda$  C,20min). 3,Secondary antibody was diluted at 1:200(room temperature, 30min). Negative control was used by secondary antibody only.



IHC staining of Human tonsil tissue paraffin-embedded, diluted at 1:200.

---

Note: This product is for in vitro research use only and is not intended for use in humans or animals.