

ALMS1 Polyclonal Antibody

Catalog No: #49084



Package Size: #49084-1 50ul #49084-2 100ul

Orders: order@signalwayantibody.comSupport: tech@signalwayantibody.com

Description

Product Name	ALMS1 Polyclonal Antibody
Host Species	Rabbit
Clonality	Polyclonal
Isotype	IgG
Purification	The antibody was affinity-purified from rabbit antiserum by affinity-chromatography using epitope-specific immunogen.
Applications	WB;IHC;IF;ELISA
Species Reactivity	Human;Mouse;Rat
Specificity	ALMS1 Polyclonal Antibody detects endogenous levels of ALMS1 protein.
Immunogen Description	Synthesized peptide derived from ALMS1 .
Target Name	ALMS1
Other Names	ALMS1;KIAA0328;Alstrom syndrome protein 1
Calculated MW	460kD
Concentration	1 mg/ml
Formulation	Liquid in PBS containing 50% glycerol, 0.5% BSA and 0.02% sodium azide.
Storage	Store at -20°C/1 year

Application Details

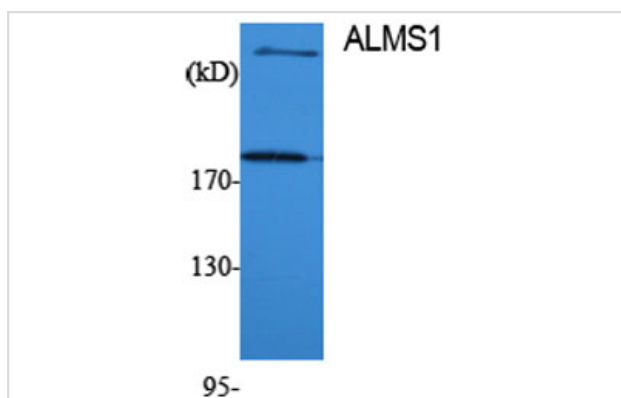
WB 1:500 - 1:2000.

IHC 1:100 - 1:300.

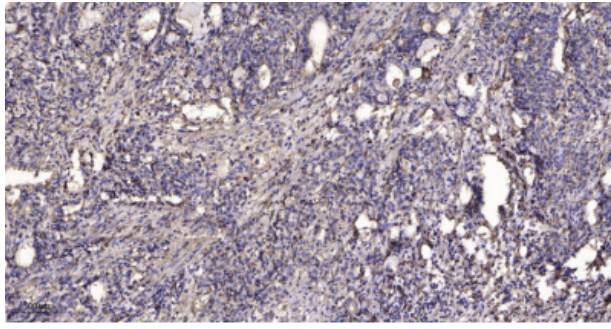
ELISA: 1:40000..

IF 1:50-200

Images



Western Blot analysis of various cells using ALMS1 Polyclonal Antibody



Immunohistochemical analysis of paraffin-embedded human Gastric adenocarcinoma.

Note: This product is for in vitro research use only and is not intended for use in humans or animals.