

# RabbitB Anti-DRD2 B antibody

Catalog No: #49500



Package Size: #49500-1 50ul #49500-2 100ul

Orders: [order@signalwayantibody.com](mailto:order@signalwayantibody.com)

Support: [tech@signalwayantibody.com](mailto:tech@signalwayantibody.com)

## Description

Product Name	RabbitB Anti-DRD2 B antibody
Host Species	Rabbit
Clonality	Polyclonal
Isotype	IgG
Purification	affinity purified by Protein A
Applications	WB, IHC-P, IHC-F, IF, Flow-Cyt, ELISA
Species Reactivity	Human,Mouse,Rat
Immunogen Description	KLH conjugated synthetic peptide derived from human DRD2
SDS-PAGE MW	51kDa
Concentration	1mg/ml
Formulation	0.01M TBS(pH7.4) with 1% BSA, 0.03% Proclin300 and 50% Glycerol.
Storage	Shipped at 4°C. Store at -20 °C for one year. Avoid repeated freeze/thaw cycles.

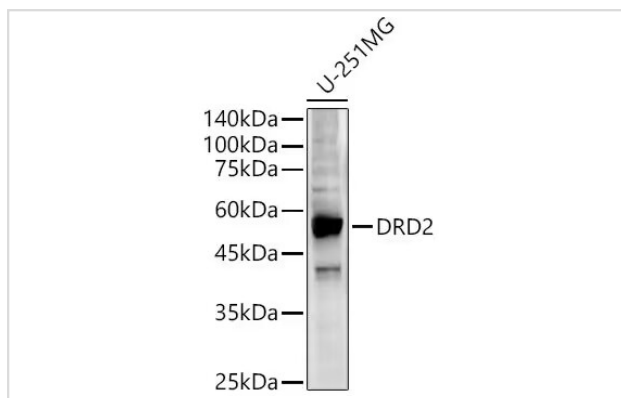
## Application Details

WB=1:500-2000, IHC-P=1:100-500,

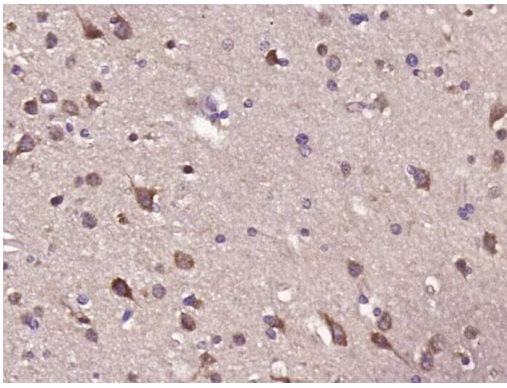
IHC-F=1:100-500, IF=1:100-500,

Flow-Cyt=2ug/Test, ELISA=1:5000-10000

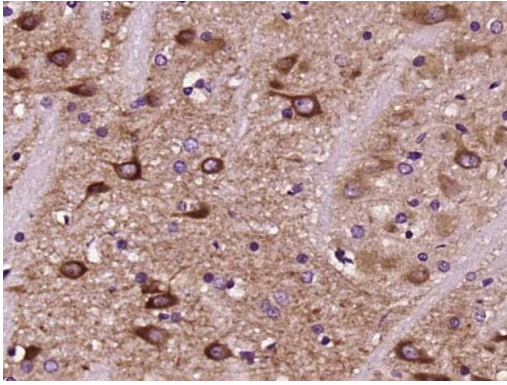
## Images



Western blot analysis of U-251MG using Anti-DRD2 Antibody



Immunohistochemical analysis of paraffin embedded (Human glioma) using Anti-DRD2 Antibody



Immunohistochemical analysis of paraffin embedded (Rat brain) using Anti-DRD2 Antibody

---

Note: This product is for in vitro research use only and is not intended for use in humans or animals.