

## Sox-6 Polyclonal Antibody

Catalog No: #49140



Package Size: #49140-1 50ul #49140-2 100ul

Orders: [order@signalwayantibody.com](mailto:order@signalwayantibody.com)Support: [tech@signalwayantibody.com](mailto:tech@signalwayantibody.com)

## Description

|                       |   |
|-----------------------|---|
| Product Name          | Sox-6 Polyclonal Antibody   |
| Host Species          | Rabbit  |
| Clonality             | Polyclonal  |
| Isotype               | IgG   |
| Purification          | The antibody was affinity-purified from rabbit antiserum by affinity-chromatography using epitope-specific immunogen. |
| Applications          | WB;IHC;IF;ELISA   |
| Species Reactivity    | Human;Mouse;Rat;Monkey  |
| Specificity           | Sox-6 Polyclonal Antibody detects endogenous levels of Sox-6 protein.   |
| Immunogen Description | The antiserum was produced against synthesized peptide derived from human SOX6.                                       |
| Target Name           | SOX6  |
| Other Names           | SOX6;Transcription factor SOX-6   |
| Calculated MW         | 91kD  |
| Concentration         | 1 mg/ml   |
| Formulation           | Liquid in PBS containing 50% glycerol, 0.5% BSA and 0.02% sodium azide.   |
| Storage               | Store at -20°C/1 year   |

## Application Details

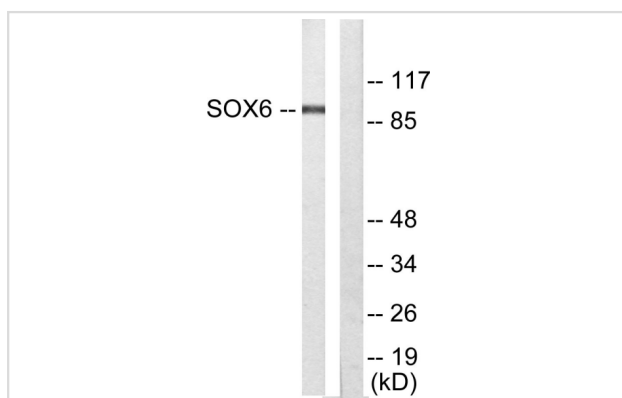
WB 1:500 - 1:2000.

IHC 1:100 - 1:300.

ELISA: 1:5000..

IF 1:50-200

## Images



Western blot analysis of lysates from Jurkat cells, using SOX6 Antibody. The lane on the right is blocked with the synthesized peptide.



Immunohistochemical analysis of paraffin-embedded human tonsil.

---

Note: This product is for in vitro research use only and is not intended for use in humans or animals.