

## CYP2W1 Polyclonal Antibody

Catalog No: #49185



Package Size: #49185-1 50ul #49185-2 100ul

Orders: [order@signalwayantibody.com](mailto:order@signalwayantibody.com)Support: [tech@signalwayantibody.com](mailto:tech@signalwayantibody.com)

## Description

Product Name	CYP2W1 Polyclonal Antibody
Host Species	Rabbit
Clonality	Polyclonal
Isotype	IgG
Purification	The antibody was affinity-purified from rabbit antiserum by affinity-chromatography using epitope-specific immunogen.
Applications	WB;IHC;IF;ELISA
Species Reactivity	Human;Rat;Mouse
Specificity	CYP2W1 Polyclonal Antibody detects endogenous levels of CYP2W1 protein.
Immunogen Description	The antiserum was produced against synthesized peptide derived from human Cytochrome P450 2W1.
Target Name	CYP2W1
Other Names	CYP2W1;Cytochrome P450 2W1;CYPIIW1
Calculated MW	55kD
Concentration	1 mg/ml
Formulation	Liquid in PBS containing 50% glycerol, 0.5% BSA and 0.02% sodium azide.
Storage	Store at -20°C/1 year

## Application Details

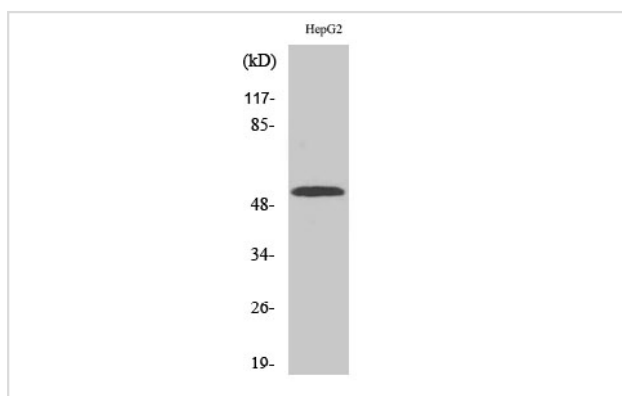
WB 1:500 - 1:2000.

IHC 1:100 - 1:300.

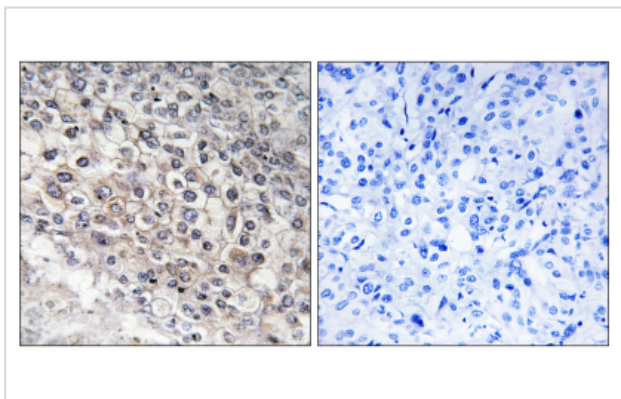
IF 1:200 - 1:1000.

ELISA: 1:40000.

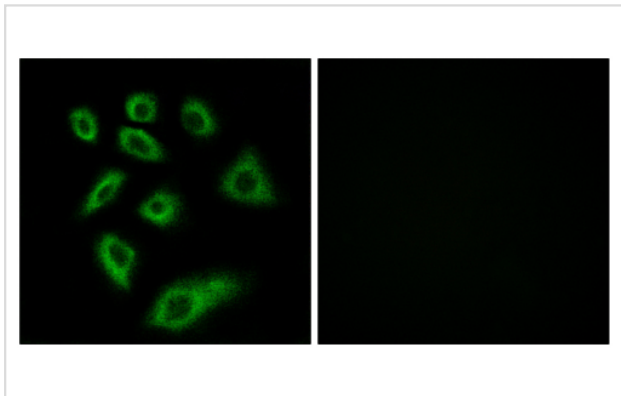
## Images



Western Blot analysis of various cells using CYP2W1 Polyclonal Antibody



Immunohistochemistry analysis of paraffin-embedded human liver carcinoma tissue, using Cytochrome P450 2W1 Antibody. The picture on the right is blocked with the synthesized peptide.



Immunofluorescence analysis of HUVEC cells, using Cytochrome P450 2W1 Antibody. The picture on the right is blocked with the synthesized peptide.

---

Note: This product is for in vitro research use only and is not intended for use in humans or animals.