

## USP32 Polyclonal Antibody

Catalog No: #49189

Orders: [order@signalwayantibody.com](mailto:order@signalwayantibody.com)Support: [tech@signalwayantibody.com](mailto:tech@signalwayantibody.com)

## Description

Product Name	USP32 Polyclonal Antibody
Host Species	Rabbit
Clonality	Polyclonal
Isotype	IgG
Purification	The antibody was affinity-purified from rabbit antiserum by affinity-chromatography using epitope-specific immunogen.
Applications	IHC;IF;WB;ELISA
Species Reactivity	Human;Mouse
Specificity	USP32 Polyclonal Antibody detects endogenous levels of USP32 protein.
Immunogen Description	The antiserum was produced against synthesized peptide derived from human USP32. AA range:271-320
Target Name	USP32
Other Names	USP32;USP10;Ubiquitin carboxyl-terminal hydrolase 32;Deubiquitinating enzyme 32;Renal carcinoma antigen NY-REN-60;Ubiquitin thioesterase 32;Ubiquitin-specific-processing protease 32
Calculated MW	180kD
Concentration	1 mg/ml
Formulation	Liquid in PBS containing 50% glycerol, 0.5% BSA and 0.02% sodium azide.
Storage	Store at -20°C/1 year

## Application Details

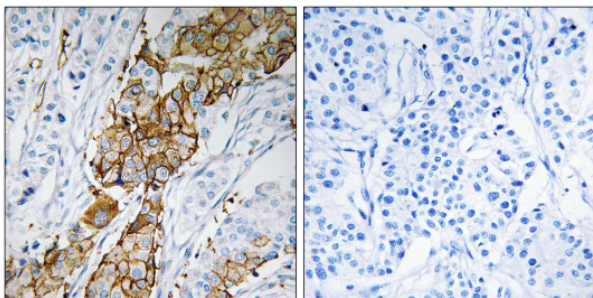
WB 1:500-2000

IHC 1:100 - 1:300.

ELISA: 1:40000..

IF 1:50-200

## Images



Immunohistochemistry analysis of paraffin-embedded human breast carcinoma tissue, using USP32 Antibody. The picture on the right is blocked with the synthesized peptide.

---

Note: This product is for in vitro research use only and is not intended for use in humans or animals.