

Ribosomal Protein L3 Polyclonal Antibody

Catalog No: #49245



Package Size: #49245-1 50ul #49245-2 100ul

Orders: order@signalwayantibody.comSupport: tech@signalwayantibody.com

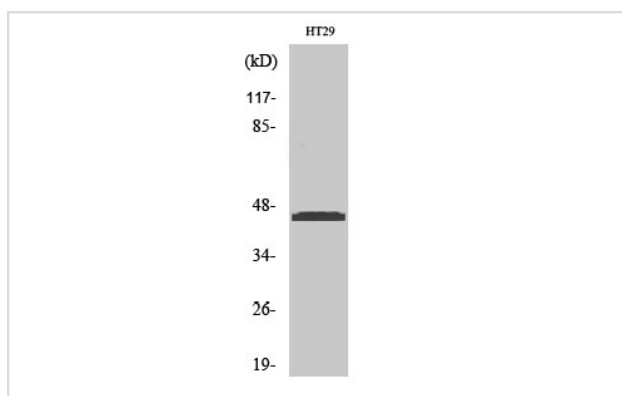
Description

Product Name	Ribosomal Protein L3 Polyclonal Antibody
Host Species	Rabbit
Clonality	Polyclonal
Isotype	IgG
Purification	The antibody was affinity-purified from rabbit antiserum by affinity-chromatography using epitope-specific immunogen.
Applications	WB;IHC;IF;ELISA
Species Reactivity	Human;Mouse;Rat
Specificity	Ribosomal Protein L3 Polyclonal Antibody detects endogenous levels of Ribosomal Protein L3 protein.
Immunogen Description	The antiserum was produced against synthesized peptide derived from human RPL3.
Other Names	RPL3;OK/SW-cl.32;60S ribosomal protein L3;HIV-1 TAR RNA-binding protein B;TARBP-B
Concentration	1 mg/ml
Formulation	Liquid in PBS containing 50% glycerol, 0.5% BSA and 0.02% sodium azide.
Storage	Store at -20°C

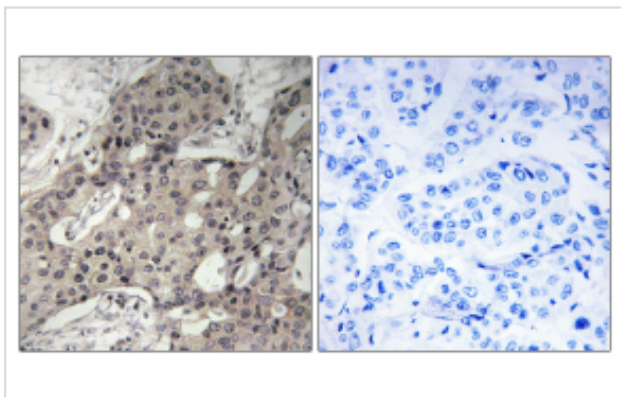
Application Details

WB 1:500 - 1:2000. IHC 1:100 - 1:300. ELISA: 1:20000.. IF 1:50-200

Images



Western Blot analysis of various cells using Ribosomal Protein L3 Polyclonal Antibody



Immunohistochemistry analysis of paraffin-embedded human breast carcinoma tissue, using RPL3 Antibody. The picture on the right is blocked with the synthesized peptide.

Note: This product is for in vitro research use only and is not intended for use in humans or animals.