

## F105A rabbit pAb

Catalog No: #49260



Package Size: #49260-1 50ul #49260-2 100ul

Orders: [order@signalwayantibody.com](mailto:order@signalwayantibody.com)Support: [tech@signalwayantibody.com](mailto:tech@signalwayantibody.com)

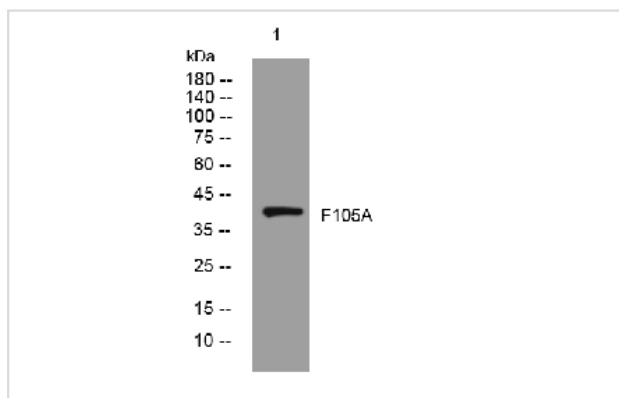
## Description

Product Name	F105A rabbit pAb
Host Species	Rabbit
Clonality	Polyclonal
Isotype	IgG
Purification	The antibody was affinity-purified from rabbit antiserum by affinity-chromatography using epitope-specific immunogen.
Applications	WB
Species Reactivity	Human;Mouse;Rat
Specificity	This antibody detects endogenous levels of F105A at Human/Mouse/Rat
Immunogen Description	Synthesized peptide derived from human F105A
Target Name	F105A
Calculated MW	39kD
Concentration	1 mg/ml
Formulation	Liquid in PBS containing 50% glycerol, 0.5% BSA and 0.02% sodium azide.
Storage	Store at -20°C/1 year

## Application Details

WB 1α 500-2000

## Images



Western blot analysis of lysates from VEC cells, primary antibody was diluted at 1:1000, 4° over night

Note: This product is for in vitro research use only and is not intended for use in humans or animals.