

Anti-His Tag Antibody(DM1), Rabbit mAb

Catalog No: #29617



Package Size: #29617-1 50ul #29617-2 100ul

Orders: order@signalwayantibody.com

Support: tech@signalwayantibody.com

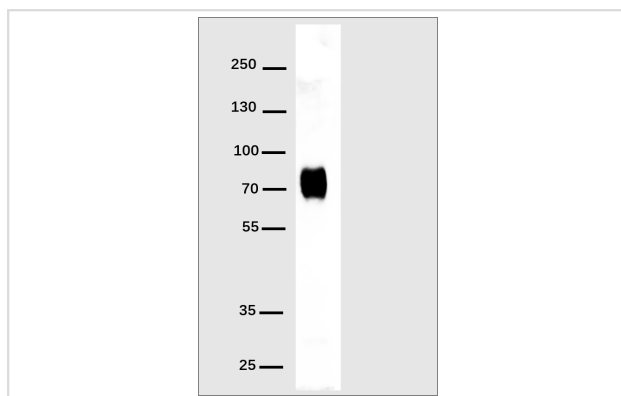
Description

Product Name	Anti-His Tag Antibody(DM1), Rabbit mAb
Host Species	Rabbit
Clonality	Monoclonal
Clone No.	DM1
Isotype	Rabbit IgG
Purification	Purified from cell culture supernatant by affinity chromatography
Applications	WB, ELISA
Species Reactivity	His tags localized at the amino- or carboxyl?terminus.
Immunogen Description	6X His synthetic peptide coupled to KLH
Other Names	his tag
Calculated MW	70 kDa
Formulation	Lyophilized from sterile PBS, pH 7.4. Normally 5 % β 8% trehalose is added as protectants before lyophilization.
Storage	Store at -20°C for 12 months (Avoid repeated freezing and thawing)

Application Details

WB 1/1000

Images



Western blot analysis of his-tag fusion protein using His-Tag antibody at 1:1000 dilution. Secondary antibody: HRP Goat Anti-Rabbit IgG (H+L) at 1:5000 dilution. His-tag fusion protein : 70kDa, 20ng per lane. Blocking buffer: 5% nonfat dry milk in TBST. Exposure time: 1s.

Note: This product is for in vitro research use only and is not intended for use in humans or animals.