

SEMG1 rabbit pAb

Catalog No: #49812



Package Size: #49812-1 50ul #49812-2 100ul

Orders: order@signalwayantibody.com
Support: tech@signalwayantibody.com

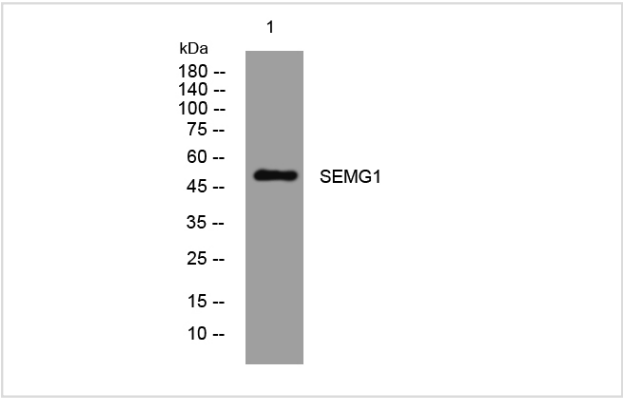
Description

Product Name	SEMG1 rabbit pAb
Host Species	Rabbit
Clonality	Polyclonal
Isotype	IgG
Purification	The antibody was affinity-purified from rabbit antiserum by affinity-chromatography using epitope-specific immunogen.
Applications	WB;ELISA;IHC
Species Reactivity	Human
Specificity	This antibody detects endogenous levels of SEMG1 at Human
Immunogen Description	Synthesized peptide derived from human SEMG1
Other Names	SEMG1 SEMG
Calculated MW	51kD
Concentration	1 mg/ml
Formulation	Liquid in PBS containing 50% glycerol, 0.5% BSA and 0.02% sodium azide.
Storage	Store at -20°C/1 year

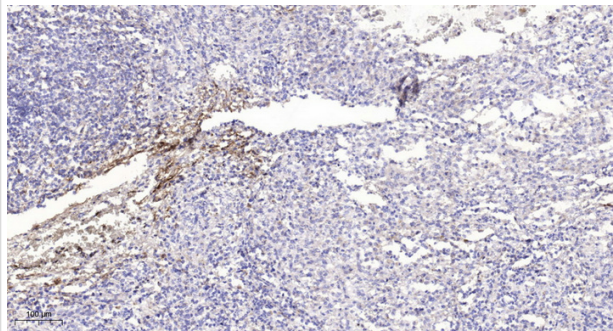
Application Details

WB 1:500-2000;
IHC 1:50-300;
ELISA 2000-20000

Images



Western blot analysis of lysates from KB cells, primary antibody was diluted at 1:1000, 4°over night



Immunohistochemical analysis of paraffin-embedded human spleen.

Note: This product is for in vitro research use only and is not intended for use in humans or animals.