

## CKR-2 Polyclonal Antibody

Catalog No: #49866



Package Size: #49866-1 50ul #49866-2 100ul

Orders: [order@signalwayantibody.com](mailto:order@signalwayantibody.com)Support: [tech@signalwayantibody.com](mailto:tech@signalwayantibody.com)

## Description

Product Name	CKR-2 Polyclonal Antibody
Host Species	Rabbit
Clonality	Polyclonal
Isotype	IgG
Purification	The antibody was affinity-purified from rabbit antiserum by affinity-chromatography using epitope-specific immunogen.
Applications	WB;IF;ELISA
Species Reactivity	Mouse;Rat
Specificity	CKR-2 Polyclonal Antibody detects endogenous levels of CKR-2 protein.
Immunogen Description	Synthesized peptide derived from CKR-2
Target Name	CCR2
Other Names	CCR2;CMKBR2;C-C chemokine receptor type 2;C-C CKR-2;CC-CKR-2;CCR-2;CCR2;Monocyte chemoattractant protein 1 receptor;MCP-1-R;CD antigen CD192
Calculated MW	46kD
Concentration	1 mg/ml
Formulation	Liquid in PBS containing 50% glycerol, 0.5% BSA and 0.02% sodium azide.
Storage	Store at -20°C/1 year

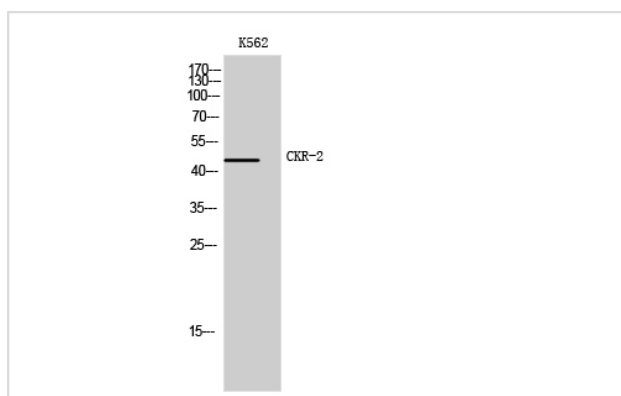
## Application Details

WB 1:500 - 1:2000.

IF 1:200 - 1:1000.

ELISA: 1:5000

## Images



Western Blot analysis of K562 cells using CKR-2 Polyclonal Antibody

---

Note: This product is for in vitro research use only and is not intended for use in humans or animals.