

## MFAP5 Polyclonal Antibody

Catalog No: #62007



Package Size: #62007-1 50ul #62007-2 100ul

Orders: [order@signalwayantibody.com](mailto:order@signalwayantibody.com)Support: [tech@signalwayantibody.com](mailto:tech@signalwayantibody.com)

## Description

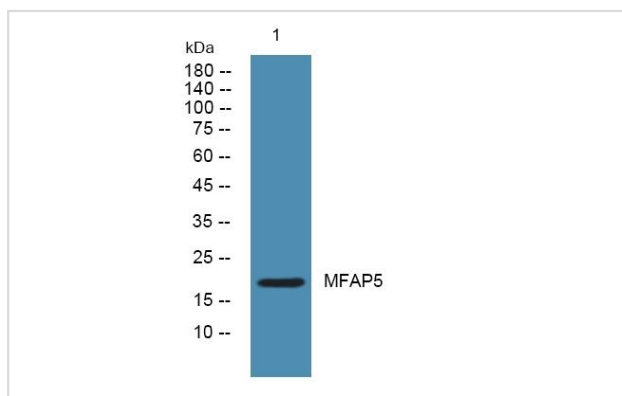
Product Name	MFAP5 Polyclonal Antibody
Host Species	Rabbit
Clonality	Polyclonal
Isotype	IgG
Purification	The antibody was affinity-purified from rabbit antiserum by affinity-chromatography using epitope-specific immunogen.
Applications	WB ELISA
Species Reactivity	Human Mouse
Specificity	MFAP5 Polyclonal Antibody detects endogenous levels of protein.
Immunogen Description	Synthesized peptide derived from human protein
Target Name	MFAP5 MAGP2
Calculated MW	19kD
Concentration	1mg/ml
Formulation	Liquid in PBS containing 50% glycerol, and 0.02% sodium azide.
Storage	Store at -20°C/1 year

## Application Details

WB 1:500-2000

ELISA 1:5000-20000

## Images



Western blot analysis of lysates from SW480 cells, primary antibody was diluted at 1:1000, 4° over night

Note: This product is for in vitro research use only and is not intended for use in humans or animals.