

CDKN2A/p16-INK4a Rabbit pAb

Catalog No: #62008

Package Size: #62008-1 50ul #62008-2 100ul

Orders: order@signalwayantibody.com

Support: tech@signalwayantibody.com

Description

Product Name	CDKN2A/p16-INK4a Rabbit pAb
Host Species	Rabbit
Clonality	Polyclonal
Isotype	IgG
Purification	affinity purified by Protein A
Applications	WB, IHC-P, IHC-F, IF, ELISA
Species Reactivity	Human, Mouse, Rat
Immunogen Description	KLH conjugated synthetic peptide derived from human CDKN2A/p16-INK4a : 61-156/156
Other Names	cyclin-dependent kinase inhibitor 2A; CDK4I; p16-INK4; p16-INK4a; cyclin-dependent kinase 4 inhibitor A; cyclin-dependent kinase inhibitor 2A, isoform 1; Cyclin dependent kinase inhibitor 2A (p16, inhibits CDK4); cell cycle inhibitor; cyclin-dependent kinase inhibitor 2a p16Ink4a; cell cycle regulator; cyclin-dependent kinase inhibitor 2a p19Arf; cyclin-dependent kinase inhibitor 2A, isoform 2; Cdkn2a; Arf; INK4A; MTS1; p16; p16Cdkn2a; p19ARF; CD2A2_HUMAN.
Calculated MW	17 kDa
Concentration	1mg/ml
Formulation	0.01M TBS (pH7.4) with 1% BSA, 0.02% Proclin300 and 50% Glycerol.
Storage	Shipped at 4°C. Store at -20°C for one year. Avoid repeated freeze/thaw cycles.

Application Details

WB 1:500-2000

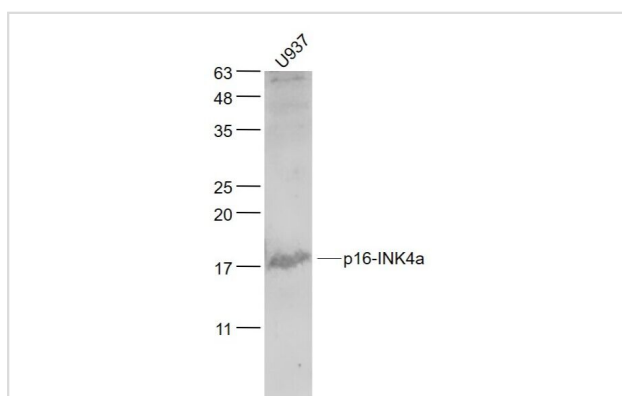
IHC-P 1:100-500

IHC-F 1:100-500

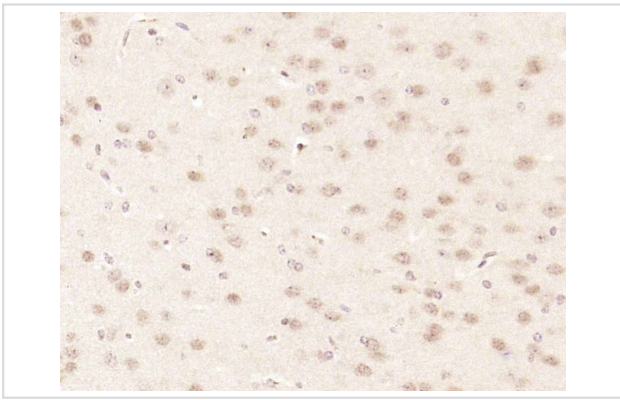
IF 1:100-500

ELISA 1:5000-10000

Images



Western blot analysis of U937 cells , using CDKN2A/p16-INK4a Rabbit pAb



Immunohistochemistry of paraffin-embedded mouse brain tissue using CDKN2A/p16-INK4a Rabbit pAb

Note: This product is for in vitro research use only and is not intended for use in humans or animals.