

GPRC5C Polyclonal Antibody

Catalog No: #62011

Orders: order@signalwayantibody.comSupport: tech@signalwayantibody.com

Description

Product Name	GPRC5C Polyclonal Antibody
Host Species	Rabbit
Clonality	Polyclonal
Isotype	IgG
Purification	The antibody was affinity-purified from rabbit antiserum by affinity-chromatography using epitope-specific immunogen.
Applications	WB,IF,ELISA
Species Reactivity	Human,Mouse,Rat,Monkey
Specificity	GPRC5C Polyclonal Antibody detects endogenous levels of GPRC5C protein.
Immunogen Description	The antiserum was produced against synthesized peptide derived from human GPRC5C.
Target Name	GPRC5C
Other Names	GPRC5C;RAIG3;PSEC0087;G-protein coupled receptor family C group 5 member C;Retinoic acid-induced gene 3 protein;RAIG-3
Calculated MW	48kD
Concentration	1mg/ml
Formulation	Liquid in PBS containing 50% glycerol, 0.5% BSA and 0.02% sodium azide.
Storage	Store at -20°C/1 year

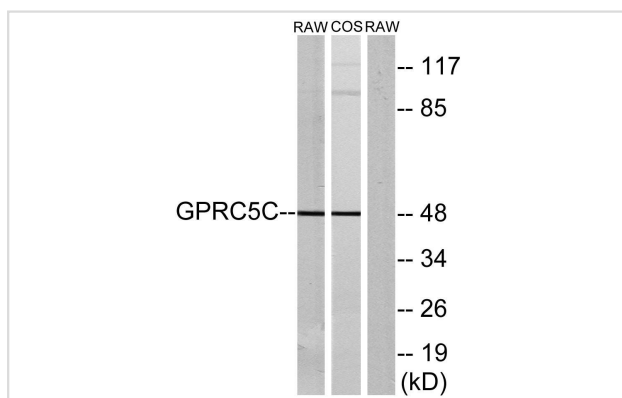
Application Details

WB 1:500 - 1:2000.

IF 1:200 - 1:1000.

ELISA: 1:5000.

Images



Western blot analysis of lysates from RAW264.7 and COS7 cells, using GPRC5C Antibody. The lane on the right is blocked with the synthesized peptide.

Note: This product is for in vitro research use only and is not intended for use in humans or animals.