

# Biotin anti-human CD10

Catalog No: #FC0126

Package Size: #FC0126-1 25ug #FC0126-2 100ug

Orders: [order@signalwayantibody.com](mailto:order@signalwayantibody.com)

Support: [tech@signalwayantibody.com](mailto:tech@signalwayantibody.com)

## Description

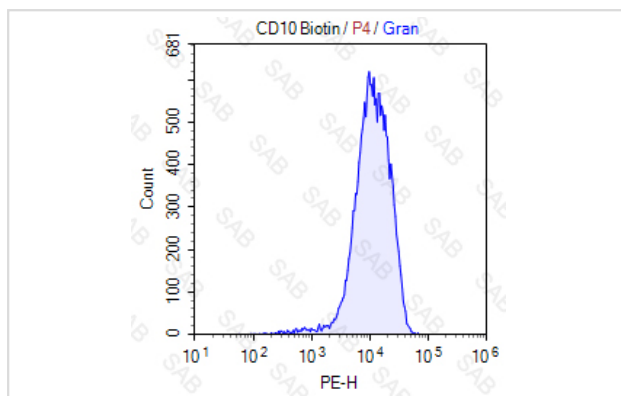
Product Name	Biotin anti-human CD10
Brief Description	mouse monoclonal antibody
Host Species	mouse
Clonality	Monoclonal
Clone No.	s-CB-CALLA
Isotype	mouse IgG2b, κ
Applications	FC
Species Reactivity	human
Conjugates	Biotin
Target Name	CD10
Formulation	0.2%BSA and 0.1%Proclin 300 Phosphate-buffered solution,PH7.2-7.4
Storage	Store at 4°C. DO NOT FREEZE. LIGHT SENSITIVE MATERIAL.

## Application Details

Test: 5 µl/Test

Notice: This reagent has been pre-diluted for use at recommended volume per test in flow cytometry analysis. Typically, 1x 10<sup>6</sup> cells can be tested per experiment. Refer to the detailed scenario as you test.

## Images



Human peripheral blood granulocytes stained with Biotin anti-human CD10(colored histogram) or Biotin mouse IgG2b κ (gray histogram),followed by SAV-PE.

Note: This product is for in vitro research use only and is not intended for use in humans or animals.