

PE-Cy5 anti-human CD38

Catalog No: #FC0172



Package Size: #FC0172-1 25Tests #FC0172-2 100Tests

Orders: order@signalwayantibody.com

Support: tech@signalwayantibody.com

Description

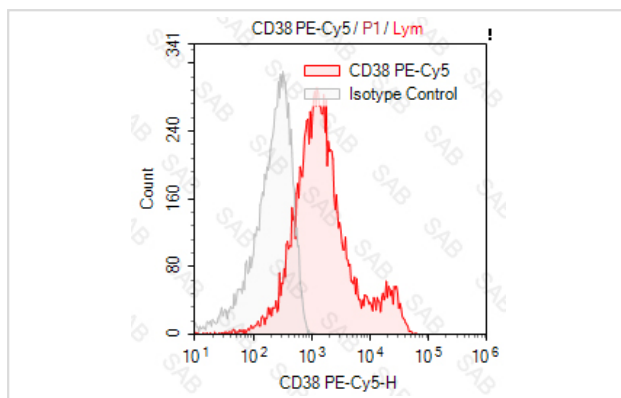
Product Name	PE-Cy5 anti-human CD38
Brief Description	mouse monoclonal antibody
Host Species	mouse
Clonality	Monoclonal
Clone No.	s-HIT2
Isotype	mouse IgG1
Applications	FC
Species Reactivity	human
Conjugates	PE-Cy5
Target Name	CD38
Formulation	0.2%BSA and 0.1%Proclin 300 Phosphate-buffered solution,PH7.2-7.4
Storage	Store at 4°C. DO NOT FREEZE. LIGHT SENSITIVE MATERIAL.

Application Details

Test: 5 µl/Test

Notice: This reagent has been pre-diluted for use at recommended volume per test in flow cytometry analysis. Typically, 1x 10⁶ cells can be tested per experiment. Refer to the detailed scenario as you test.

Images



Human peripheral blood lymphocytes stained with PE-Cy5 anti-human CD38 (colored histogram) or PE-Cy5 mouse IgG1 (gray histogram)

Note: This product is for in vitro research use only and is not intended for use in humans or animals.