

FITC anti-human HLA-DP (MHC Class II) Monomorphic

Catalog No: #FC0330

Orders: order@signalwayantibody.comSupport: tech@signalwayantibody.com

Package Size: #FC0330-1 25Tests #FC0330-2 100Tests

Description

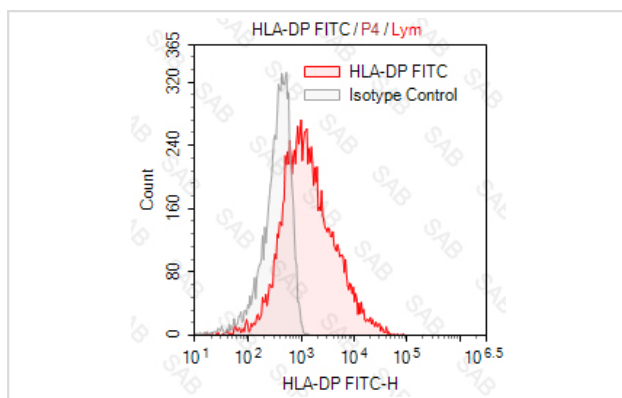
| | |
|--------------------|---|
| Product Name | FITC anti-human HLA-DP (MHC Class II) Monomorphic |
| Brief Description | mouse monoclonal antibody |
| Host Species | mouse |
| Clonality | Monoclonal |
| Clone No. | s-B7/21 |
| Isotype | mouse IgG3 |
| Applications | FC |
| Species Reactivity | human |
| Conjugates | FITC |
| Target Name | HLA-DP (MHC Class II) Monomorphic |
| Formulation | 0.2%BSA and 0.1%Proclin 300 Phosphate-buffered solution,PH7.2-7.4 |
| Storage | Store at 4°C. DO NOT FREEZE. LIGHT SENSITIVE MATERIAL. |

Application Details

Test: 5 µl/Test

Notice: This reagent has been pre-diluted for use at recommended volume per test in flow cytometry analysis. Typically, 1x 10⁶ cells can be tested per experiment. Refer to the detailed scenario as you test.

Images



Human peripheral blood lymphocytes stained with FITC anti-human HLA-DP (colored histogram) or FITC mouse IgG3 (gray histogram)

Note: This product is for in vitro research use only and is not intended for use in humans or animals.