

FITC anti-human IFN- γ

Catalog No: #FC0336



Package Size: #FC0336-1 25Tests #FC0336-2 100Tests

Orders: order@signalwayantibody.com

Support: tech@signalwayantibody.com

Description

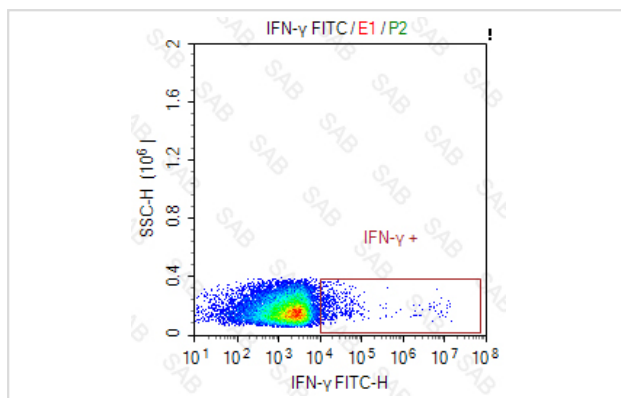
Product Name	FITC anti-human IFN- γ
Brief Description	mouse monoclonal antibody
Host Species	mouse
Clonality	Monoclonal
Clone No.	s-GAMMA3-11.1
Isotype	mouse IgG1
Applications	FC
Species Reactivity	human
Conjugates	FITC
Target Name	IFN- γ
Formulation	0.2%BSA and 0.1%Proclin 300 Phosphate-buffered solution,PH7.2-7.4
Storage	Store at 4°C. DO NOT FREEZE. LIGHT SENSITIVE MATERIAL.

Application Details

Test: 5 μ l/Test

Notice: This reagent has been pre-diluted for use at recommended volume per test in flow cytometry analysis. Typically, 1×10^6 cells can be tested per experiment. Refer to the detailed scenario as you test.

Images



Intracellular Cell Stimulation Cocktail (plus protein transport inhibitors)-stimulated peripheral blood mononuclear cells was fixed permeabilized and intracellular stained with FITC anti-human IFN- γ

Note: This product is for in vitro research use only and is not intended for use in humans or animals.