

Alexa Fluor 700 anti-human CD16

Catalog No: #FC0366



Package Size: #FC0366-1 25Tests #FC0366-2 100Tests

Orders: order@signalwayantibody.com

Support: tech@signalwayantibody.com

Description

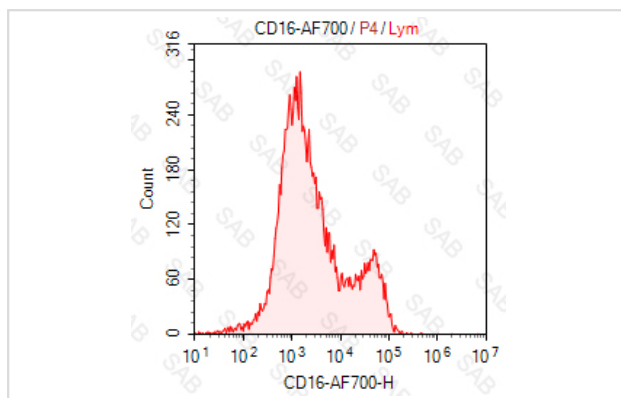
Product Name	Alexa Fluor 700 anti-human CD16
Brief Description	mouse monoclonal antibody
Host Species	mouse
Clonality	Monoclonal
Clone No.	s-3G8
Isotype	mouse IgG1,k
Applications	FC
Species Reactivity	human
Conjugates	Alexa Fluor 700
Target Name	CD16
Formulation	0.2%BSA and 0.1%Proclin 300 Phosphate-buffered solution,PH7.2-7.4
Storage	Store at 4°C. DO NOT FREEZE. LIGHT SENSITIVE MATERIAL.

Application Details

Test: 10 µl/Test

Notice: This reagent has been pre-diluted for use at recommended volume per test in flow cytometry analysis. Typically, 1x 10⁶ cells can be tested per experiment. Refer to the detailed scenario as you test.

Images



Human peripheral blood lymphocytes stained with Alexa Fluor 700 anti-human CD16 (colored histogram) or Alexa Fluor 700 mouse IgG1 κ (gray histogram)

Note: This product is for in vitro research use only and is not intended for use in humans or animals.