

PE anti-human CD52

Catalog No: #FC0539



Package Size: #FC0539-1 25Tests #FC0539-2 100Tests

Orders: order@signalwayantibody.com

Support: tech@signalwayantibody.com

Description

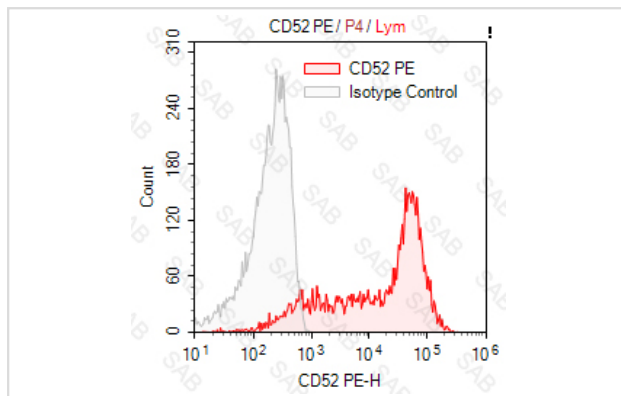
Product Name	PE anti-human CD52
Brief Description	human monoclonal antibody
Host Species	human
Clonality	Monoclonal
Clone No.	s-Campath-1H
Isotype	human IgG1 α O k
Applications	FC
Species Reactivity	human
Conjugates	PE
Target Name	CD52
Formulation	0.2%BSA and 0.1%Proclin 300 Phosphate-buffered solution,PH7.2-7.4
Storage	Store at 4°C. DO NOT FREEZE. LIGHT SENSITIVE MATERIAL.

Application Details

Test: 5 μ l/Test

Notice: This reagent has been pre-diluted for use at recommended volume per test in flow cytometry analysis. Typically, 1x 10⁶ cells can be tested per experiment. Refer to the detailed scenario as you test.

Images



Human peripheral blood lymphocytes stained with PE anti-human CD52 (colored histogram) or PE human IgG,1 κ (gray histogram)

Note: This product is for in vitro research use only and is not intended for use in humans or animals.