

PE anti-mouse CD22

Catalog No: #FC1114

Package Size: #FC1114-1 25Tests #FC1114-2 100Tests

Orders: order@signalwayantibody.com

Support: tech@signalwayantibody.com

Description

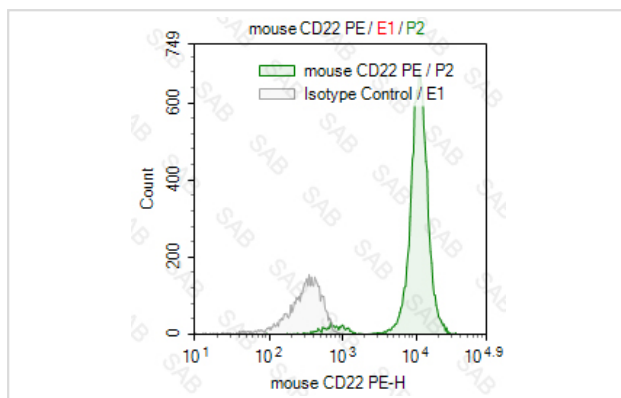
| | |
|--------------------|---|
| Product Name | PE anti-mouse CD22 |
| Brief Description | rat monoclonal antibody |
| Host Species | rat |
| Clonality | Monoclonal |
| Clone No. | s-2D6 |
| Isotype | rat IgG1 |
| Applications | FC |
| Species Reactivity | mouse |
| Conjugates | PE |
| Target Name | CD22 |
| Formulation | 0.2%BSA and 0.1%Proclin 300 Phosphate-buffered solution,PH7.2-7.4 |
| Storage | Store at 4°C. DO NOT FREEZE. LIGHT SENSITIVE MATERIAL. |

Application Details

Test: 5 µl/Test

Notice: This reagent has been pre-diluted for use at recommended volume per test in flow cytometry analysis. Typically, 1x 10⁶ cells can be tested per experiment. Refer to the detailed scenario as you test.

Images



Note: This product is for in vitro research use only and is not intended for use in humans or animals.