

# PE anti-mouse CD25

Catalog No: #FC1118



Package Size: #FC1118-1 25Tests #FC1118-2 100Tests

Orders: [order@signalwayantibody.com](mailto:order@signalwayantibody.com)

Support: [tech@signalwayantibody.com](mailto:tech@signalwayantibody.com)

## Description

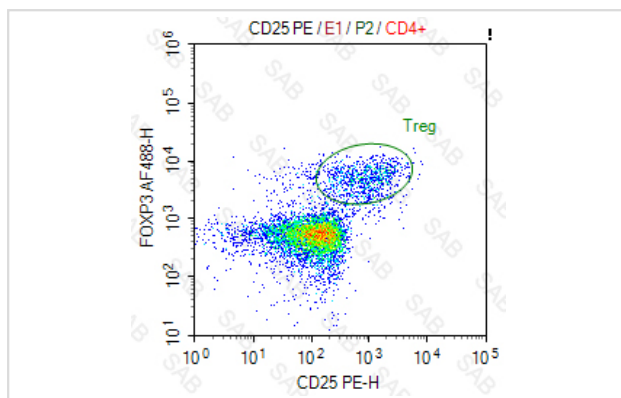
Product Name	PE anti-mouse CD25
Brief Description	Rat monoclonal antibody
Host Species	Rat
Clonality	Monoclonal
Clone No.	s-PC61.5
Isotype	Rat IgG1, $\lambda$
Applications	FC
Species Reactivity	mouse
Conjugates	PE
Target Name	CD25
Formulation	0.2%BSA and 0.1%Proclin 300 Phosphate-buffered solution,PH7.2-7.4
Storage	Store at 4°C. DO NOT FREEZE. LIGHT SENSITIVE MATERIAL.

## Application Details

Test: 5  $\mu$ l/Test

Notice: This reagent has been pre-diluted for use at recommended volume per test in flow cytometry analysis. Typically, 1x 10<sup>6</sup> cells can be tested per experiment. Refer to the detailed scenario as you test.

## Images



Note: This product is for in vitro research use only and is not intended for use in humans or animals.