

Alexa Fluor 647 anti-human CD15

Catalog No: #FC1376



Package Size: #FC1376-1 25Tests #FC1376-2 100Tests

Orders: order@signalwayantibody.com

Support: tech@signalwayantibody.com

Description

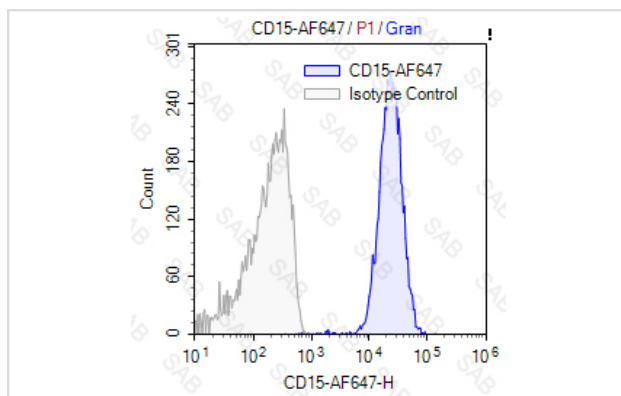
Product Name	Alexa Fluor 647 anti-human CD15
Brief Description	mouse monoclonal antibody
Host Species	mouse
Clonality	Monoclonal
Clone No.	s-W6D3A12
Isotype	mouse IgG1
Applications	FC
Species Reactivity	human
Conjugates	Alexa Fluor 647
Target Name	CD15
Formulation	0.2%BSA and 0.1%Proclin 300 Phosphate-buffered solution,PH7.2-7.4
Storage	Store at 4°C. DO NOT FREEZE. LIGHT SENSITIVE MATERIAL.

Application Details

Test: 5 µl/Test

Notice: This reagent has been pre-diluted for use at recommended volume per test in flow cytometry analysis. Typically, 1x 10⁶ cells can be tested per experiment. Refer to the detailed scenario as you test.

Images



Human peripheral blood granulocytes stained with Alexa Fluor 647 anti-human CD15 (colored histogram) or Alexa Fluor 647 mouse IgG1 (gray histogram)

Note: This product is for in vitro research use only and is not intended for use in humans or animals.