

FITC anti-human lineage Cocktail (CD3 CD14 CD16 CD19 CD20 CD56)

Catalog No: #FC1395

Orders: order@signalwayantibody.com

Package Size: #FC1395-1 25Tests #FC1395-2 100Tests

Support: tech@signalwayantibody.com

Description

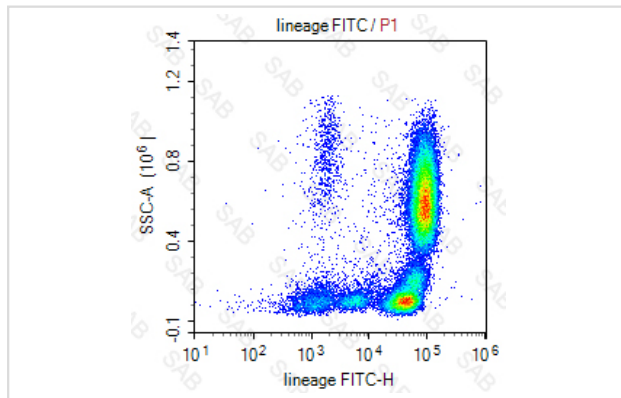
Product Name	FITC anti-human lineage Cocktail (CD3 CD14 CD16 CD19 CD20 CD56)
Clonality	Monoclonal
Applications	FC
Species Reactivity	human
Conjugates	FITC
Target Name	lineage Cocktail (CD3, CD14, CD16, CD19, CD20, CD56)
Formulation	0.2%BSA and 0.1%Proclin 300 Phosphate-buffered solution,PH7.2-7.4
Storage	Store at 4°C. DO NOT FREEZE. LIGHT SENSITIVE MATERIAL.

Application Details

Test: 5 µl/Test

Notice: This reagent has been pre-diluted for use at recommended volume per test in flow cytometry analysis. Typically, 1x 10⁶ cells can be tested per experiment. Refer to the detailed scenario as you test.

Images



Note: This product is for in vitro research use only and is not intended for use in humans or animals.