

## c-Myc Antibody

Catalog No: #58614



Package Size: #58614-1 50ul #58614-2 100ul

Orders: [order@signalwayantibody.com](mailto:order@signalwayantibody.com)Support: [tech@signalwayantibody.com](mailto:tech@signalwayantibody.com)

## Description

Product Name	c-Myc Antibody
Host Species	Rabbit
Clonality	Monoclonal
Isotype	IgG
Purification	Affinity-chromatography
Applications	WB,IHC,ICC/IF,IP,FC
Species Reactivity	Human,Mouse,Rat
Immunogen Description	A synthesized peptide derived from human c Myc
Other Names	c-Myc; Class E basic helix-loop-helix protein 39; MRTL; MYC; Myc proto-oncogene protein; v-myc;
Calculated MW	Calculated Mol Weight 49 kDa Observed Mol Weight 57 kDa
Formulation	Rabbit IgG in 10mM phosphate buffered saline , pH 7.4, 150mM sodium chloride, 0.05% BSA, 0.02% sodium azide and 50% glycerol
Storage	Store at +4°C for short term. Store at -20°C for long term. Avoid freeze/thaw cycle

## Application Details

WB 1:1000-1:2000

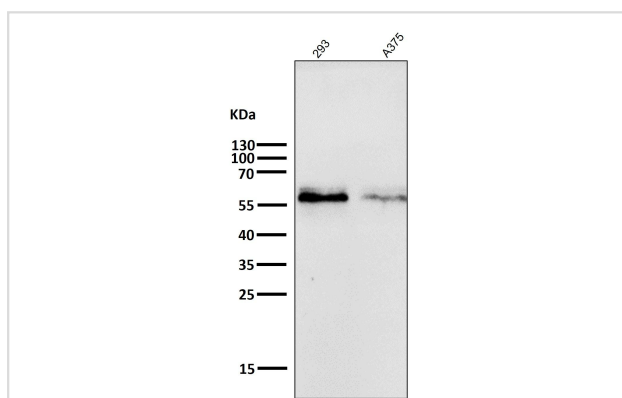
IHC 1:100-1:200

ICC/IF 1:50-1:200

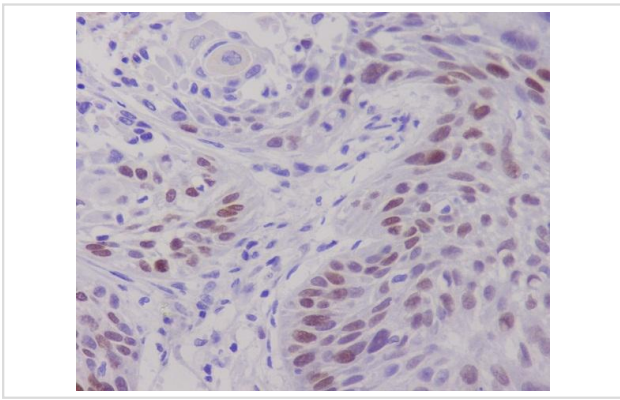
IP 1:20-1:50

FC 1:20-1:100

## Images



All lanes use the Antibody at 1:2K dilution for 1 hour at room temperature.



Immunohistochemical analysis of paraffin-embedded human lung cancer, using c-Myc Antibody.

---

Note: This product is for in vitro research use only and is not intended for use in humans or animals.