

E-Cadherin mouse mAb

Catalog No: #62037



Package Size: #62037-1 50ul #62037-2 100ul

Orders: [order@signalwayantibody.com](mailto:order@signalwayantibody.com)  
Support: [tech@signalwayantibody.com](mailto:tech@signalwayantibody.com)

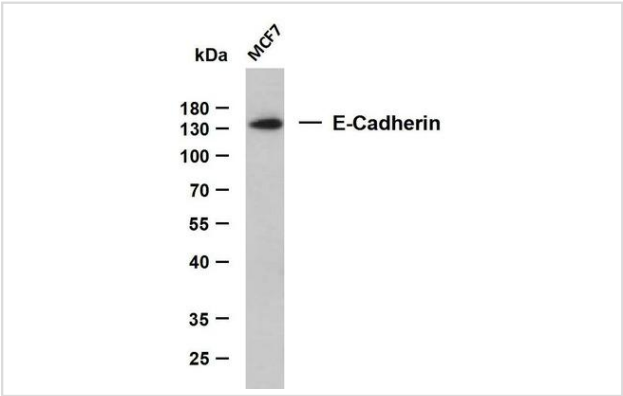
Description

Product Name	E-Cadherin mouse mAb
Host Species	Mouse
Clonality	Monoclonal
Isotype	IgG2b, kappa
Purification	Protein G
Applications	WB,IHC,IF,ELISA
Species Reactivity	Human,Mouse,Rat
Specificity	The antibody can specifically recognize E-cadherin protein.
Immunogen Description	Synthesized peptide derived from human protein.
Target Name	CDH1 CDHE UVO
Other Names	Cadherin-1αO CAM 120/80αO Epithelial cadherin (E-cadherin)αO UvomorulinαO CD324αO CDH1αO CDHE
Calculated MW	120kD
Formulation	PBS, 50% glycerol, 0.05% Proclin 300, 0.05%BSA
Storage	Store at -20°C/1 year

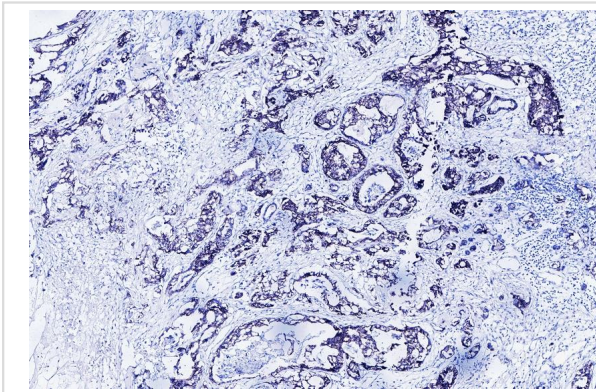
Application Details

WB 1:500-2000.  
IHC 1:200-1000.  
IF 1:100-500.  
ELISA 1:1000-5000

Images



Whole cell lysates were separated by 15% SDS-PAGE, and the membrane was blotted with anti-E-Cadherin antibody.



Human Breast carcinoma tissue was stained with E-cadherin Antibody

---

Note: This product is for in vitro research use only and is not intended for use in humans or animals.