

Strep-tag II Antibody

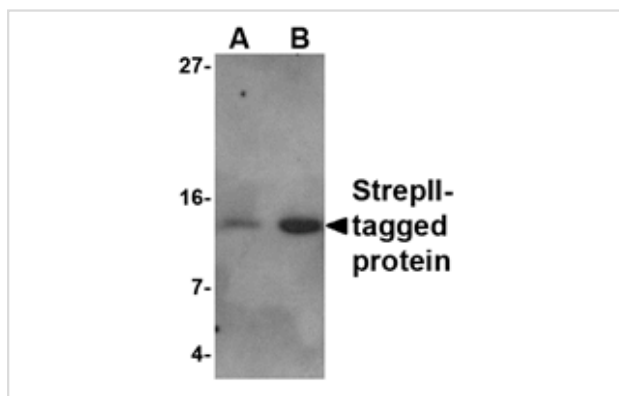
Catalog No: #24578

Orders: order@signalwayantibody.comSupport: tech@signalwayantibody.com

Description

Product Name	Strep-tag II Antibody
Host Species	Rabbit
Clonality	Polyclonal
Purification	Affinity chromatography purified via peptide column
Applications	ELISA WB
Immunogen Type	Peptide
Immunogen Description	Raised against the amino acid sequence Γ B' Γ \pm srWSHPQFEKsh Γ B' Γ \pm .
Target Name	Strep-tag II
Other Names	StrepII-tag
Concentration	1mg/ml
Formulation	Supplied in PBS containing 0.02% sodium azide.
Storage	Can be stored at -20°C, stable for one year. As with all antibodies care should be taken to avoid repeated freeze thaw cycles. Antibodies should not be exposed to prolonged high temperatures.

Images



Western blot analysis of (A) 5 and (B) 25ng of StrepII-tagged recombinant protein with StrepII antibody at 1 ug/mL.

Background

Streptavidin is a tetrameric protein purified from *Streptomyces avidinii*. It has wide use in numerous molecular biological protocols due to its strong affinity for biotin. The original Strep-tag is a nine amino acid peptide with high specificity and affinity towards streptavidin. The addition of this tag to the C-terminus of recombinant proteins allowed the simple purification of protein by use of affinity columns. It was re-engineered (and re-named Strep-tag II) to allow it to also be placed at the N-terminus of recombinant proteins.

Note: This product is for in vitro research use only and is not intended for use in humans or animals.