

TEM7 Antibody

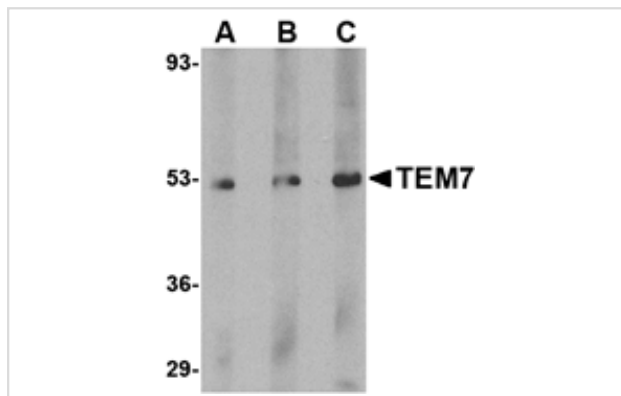
Catalog No: #24580

Orders: order@signalwayantibody.comSupport: tech@signalwayantibody.com

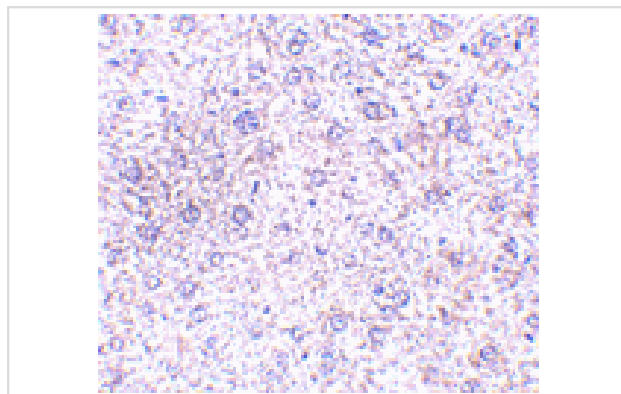
Description

Product Name	TEM7 Antibody
Host Species	Rabbit
Clonality	Polyclonal
Purification	Affinity chromatography purified via peptide column
Applications	ELISA WB IHC
Species Reactivity	Hu Ms Rt
Immunogen Type	Peptide
Immunogen Description	Raised against a 16 amino acid peptide from near the carboxy terminus of human TEM7.
Target Name	TEM7
Other Names	Tumor endothelial marker 7, TEM3, plexin domain-containing protein 1, PLXDC1
Accession No.	AAG00869
Concentration	1mg/ml
Formulation	Supplied in PBS containing 0.02% sodium azide.
Storage	Can be stored at -20°C, stable for one year. As with all antibodies care should be taken to avoid repeated freeze thaw cycles. Antibodies should not be exposed to prolonged high temperatures.

Images



Western blot analysis of TEM7 in human liver tissue lysate with TEM7 antibody at (A) 0.5, (B) 1 and (C) 2 ug/mL.



Immunohistochemistry of TEM7 in mouse liver tissue with TEM7 antibody at 2.5 ug/mL.

Background

Tumor endothelial marker 7 (TEM7) was identified through serial analysis of gene expression on endothelial cells isolated from human normal and malignant colorectal tissues. Further experiments verified TEM7 was highly expressed in the endothelium of numerous other cancer types including breast, lung and brain tumors. At least four isoforms of TEM7 are known to exist; these include intracellular, secreted, and membrane-bound forms. A homologous protein, TEM7R (also known as PLXDC2), acts as a binding partner to TEM7 and is also abundantly expressed in the endothelium of malignant colorectal cancer but is absent or rare in normal colon mucosa. High expression of TEM7 is associated with metastasis and poor survival of patients with osteogenic sarcoma.

Note: This product is for in vitro research use only and is not intended for use in humans or animals.