

## BRAL1 Antibody

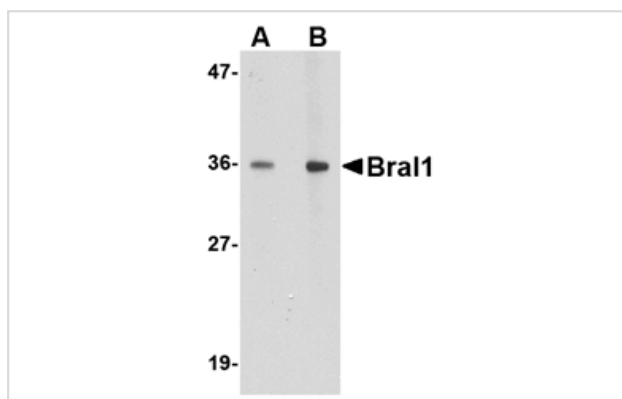
Catalog No: #24646

Orders: [order@signalwayantibody.com](mailto:order@signalwayantibody.com)Support: [tech@signalwayantibody.com](mailto:tech@signalwayantibody.com)

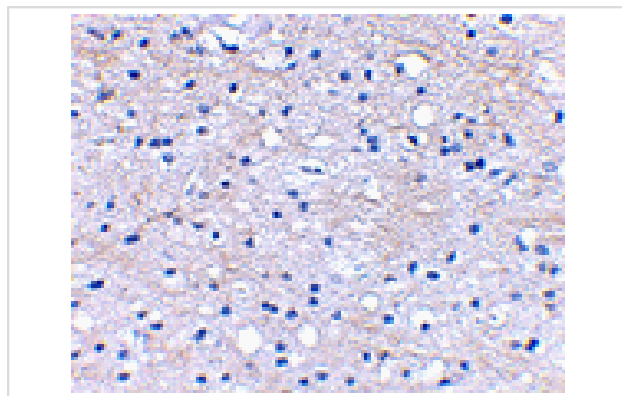
## Description

Product Name	BRAL1 Antibody
Host Species	Rabbit
Clonality	Polyclonal
Purification	Affinity chromatography purified via peptide column
Applications	ELISA WB IHC
Species Reactivity	Hu Ms Rt
Immunogen Type	Peptide
Immunogen Description	Raised against a 12 amino acid peptide from near the center of human BRAL1.
Target Name	BRAL1
Other Names	Brain link protein-1, hyaluronan and proteoglycan link protein 2, HAPLN2
Accession No.	NP_068589
Concentration	1mg/ml
Formulation	Supplied in PBS containing 0.02% sodium azide.
Storage	Antibody can be stored at 4°C up to one year. Antibodies should not be exposed to prolonged high temperatures.

## Images



Western blot analysis of BRAL1 in human brain tissue lysate with BRAL1 antibody at (A) 1 and (B) 2 ug/mL.



Immunohistochemical staining of human brain tissue using BRAL1 antibody at 2.5 ug/mL.

## Background

---

BRAL1 is a member a superfamily consisting of several highly homologous hyaluronan and proteoglycan binding link proteins. BRAL1 is predominantly expressed in brain tissue and spinal cord. Like other members in the link-module superfamily, BRAL1 contains an immunoglobulin-like fold and two proteoglycan tandem repeats (PTRs). Its mRNA expression pattern is similar to other lectican proteoglycans, suggesting that BRAL1 may act to stabilize the binding between the extracellular matrix molecule hyaluronan and brevican. Immunostaining of mouse brain showed BRAL1 expression at P20 in the white matter of the developing cerebellum and in myelinated fiber tracts in the adult brain, suggesting that expression starts when axonal myelination occurs.

---

Note: This product is for in vitro research use only and is not intended for use in humans or animals.