

## MARCKS(Phospho-Ser158) Antibody

Catalog No: #11293



Package Size: #11293-1 50ul #11293-2 100ul

Orders: order@signalwayantibody.com

Support: tech@signalwayantibody.com

## Description

Product Name	MARCKS(Phospho-Ser158) Antibody
Host Species	Rabbit
Clonality	Polyclonal
Purification	Antibodies were produced by immunizing rabbits with synthetic phosphopeptide and KLH conjugates. Antibodies were purified by affinity-chromatography using epitope-specific phosphopeptide. Non-phospho specific antibodies were removed by chromatography using non-phosphopeptide.
Applications	WB IF
Species Reactivity	Hu Ms Rt
Specificity	The antibody detects endogenous level of MARCKS only when phosphorylated at serine 158.
Immunogen Type	Peptide-KLH
Immunogen Description	Peptide sequence around phosphorylation site of serine 158 (R-F-S(p)-F-K) derived from Human MARCKS.
Target Name	MARCKS
Modification	Phospho
Other Names	MACS; MARCS; PKCSL; PRKCSL; Protein kinase C substrate
Accession No.	Swiss-Prot: P29966NCBI Protein: NP_002347.5
Concentration	1.0mg/ml
Formulation	Supplied at 1.0mg/mL in phosphate buffered saline (without Mg <sup>2+</sup> and Ca <sup>2+</sup> ), pH 7.4, 150mM NaCl, 0.02% sodium azide and 50% glycerol.
Storage	Store at -20°C for long term preservation (recommended). Store at 4°C for short term use.

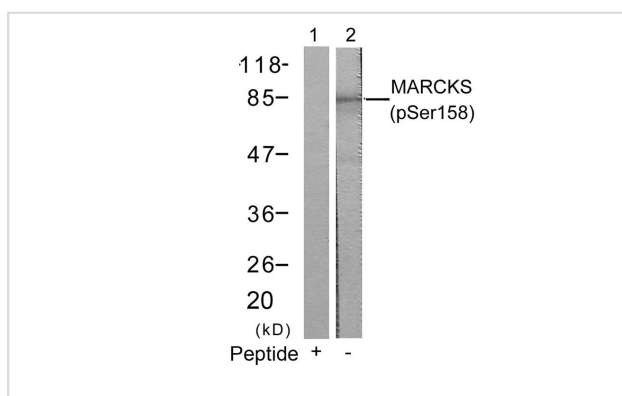
## Application Details

Predicted MW: 80kd

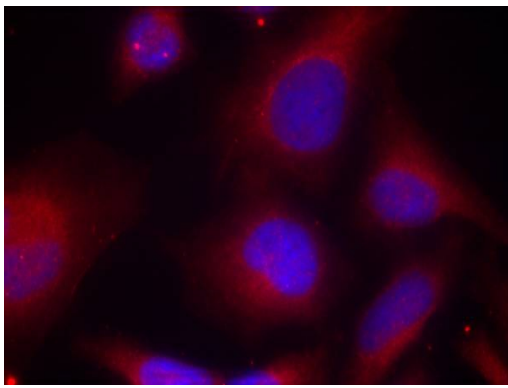
Western blotting: 1:500~1:1000

Immunofluorescence: 1:100~1:200

## Images



Western blot analysis of extracts from 3T3 cells using MARCKS(Phospho-Ser158) Antibody #11293(Lane 2) and the same antibody preincubated with blocking peptide(Lane1).



Immunofluorescence staining of methanol-fixed HeLa cells using MARCKS(Phospho-Ser158) Antibody #11293.

## Background

MARCKS is the most prominent cellular substrate for protein kinase C. This protein binds calmodulin, actin, and synapsin. MARCKS is a filamentous (F) actin cross-linking protein.

Pariser H, et al. Proc Natl Acad Sci U S A 2005 Aug 30; 102(35): 12407-12412

Nagumo H, et al. Biochem Biophys Res Commun 2001 Jan 26; 280(3): 605-609

Yamamoto H, et al. Arch Biochem Biophys 1998 Nov 15; 359(2): 151-159

Note: This product is for in vitro research use only and is not intended for use in humans or animals.