

# RUNX1 Antibody

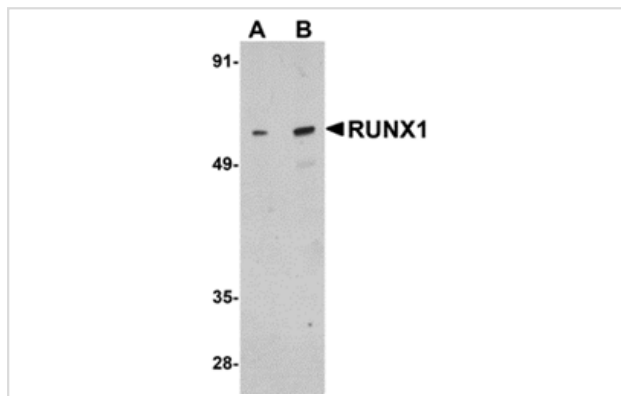
Catalog No: #24886

Orders: [order@signalwayantibody.com](mailto:order@signalwayantibody.com)Support: [tech@signalwayantibody.com](mailto:tech@signalwayantibody.com)

## Description

Product Name	RUNX1 Antibody
Host Species	Rabbit
Clonality	Polyclonal
Purification	Affinity chromatography purified via peptide column
Applications	ELISA WB
Species Reactivity	Hu Ms Rt
Immunogen Type	Peptide
Immunogen Description	Raised against a 16 amino acid peptide from near the center of human RUNX1.
Target Name	RUNX1
Other Names	Runt-related transcription factor 1, AML1, AMLCR1, CBFA2, EVI-1
Accession No.	AAI36381
Concentration	1mg/ml
Formulation	Supplied in PBS containing 0.02% sodium azide.
Storage	Can be stored at -20°C, stable for one year. As with all antibodies care should be taken to avoid repeated freeze thaw cycles. Antibodies should not be exposed to prolonged high temperatures.

## Images



Western blot analysis of RUNX1 in Raji cell lysate with RUNX1 antibody at (A) 1 and (B) 2 ug/mL.

## Background

RUNX1 is one of three mammalian RUNX genes that control multiple aspects of embryonic development and are responsible for the pathogenesis of many human diseases. RUNX1 plays major roles in the development of nociceptive sensory neurons in addition to hematopoietic stem cells (HSC) with the exception of the erythroid lineage. During development, Notch signals mediate RUNX1 induction with SCL/GATA/Ets factors, and Wnt signals potentially cooperate with RUNX1 to facilitate adult HSC expansion via cooperative induction of cyclin D, cdk4, and other cell cycle regulators. In turn, RUNX1 regulates cell cycle transitions dependent on functional/physical interactions with other proteins such as HDAC1 and -3, mSin3A, p300, SMAD proteins, and LEF/TCF.

---

Note: This product is for in vitro research use only and is not intended for use in humans or animals.