

JMJD1C Antibody

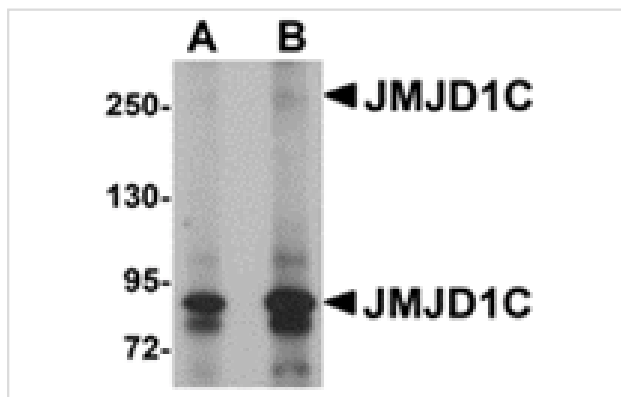
Catalog No: #24957

Orders: order@signalwayantibody.comSupport: tech@signalwayantibody.com

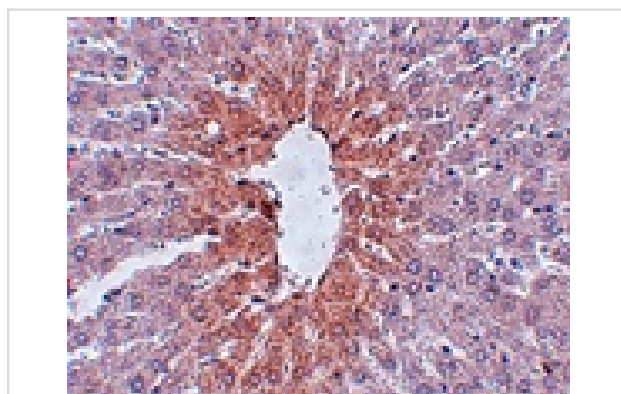
Description

Product Name	JMJD1C Antibody
Host Species	Rabbit
Clonality	Polyclonal
Purification	Affinity chromatography purified via peptide column
Applications	ELISA WB IHC
Species Reactivity	Hu Ms Rt
Specificity	This antibody will not cross-react with JMJD1A or JMJD1B.
Immunogen Type	Peptide
Immunogen Description	Raised against a 20 amino acid peptide from near the amino terminus of human JMJD1C.
Target Name	JMJD1C
Other Names	Jumonji domain containing 1C protein, TRIP8
Accession No.	NP_116165
Concentration	1mg/ml
Formulation	Supplied in PBS containing 0.02% sodium azide.
Storage	Can be stored at -20°C, stable for one year. As with all antibodies care should be taken to avoid repeated freeze thaw cycles. Antibodies should not be exposed to prolonged high temperatures.

Images



Western blot analysis of JMJD1C in human liver tissue lysate with JMJD1C antibody at (A) 1 and (B) 2 ug/mL.



Immunohistochemistry of JMJD1C in rat liver tissue with JMJD1C antibody at 2.5 ug/mL.

Background

The jumonji domain containing 1C protein (JMJD1C) was initially discovered in silico, and later suggested to be a candidate gene for autism. Like the related proteins JMJD1A and JMJD1B, JMJD1C is a histone H3K9 demethylase implicated in the nuclear hormone receptor-based transcriptional regulation. JMJD1C mRNA is highly expressed in undifferentiated embryonic stem (ES) cells as well as pancreatic islet, diffuse-type gastric cancer, and other tissues and tumors. The JMJD1C gene promoter contains bHLH-, AP-1-, and POU5F1-binding sites, and as preferential expression of POU5F1 has been reported in ES cells, pancreatic islet, and diffuse-type gastric cancer, it has been suggested that POU5F1-mediated expression of JMJD1C reactivates previously silenced genes in ES cells and diffuse-type gastric cancer. At least three isoforms of JMJD1C are known to exist.

Note: This product is for in vitro research use only and is not intended for use in humans or animals.